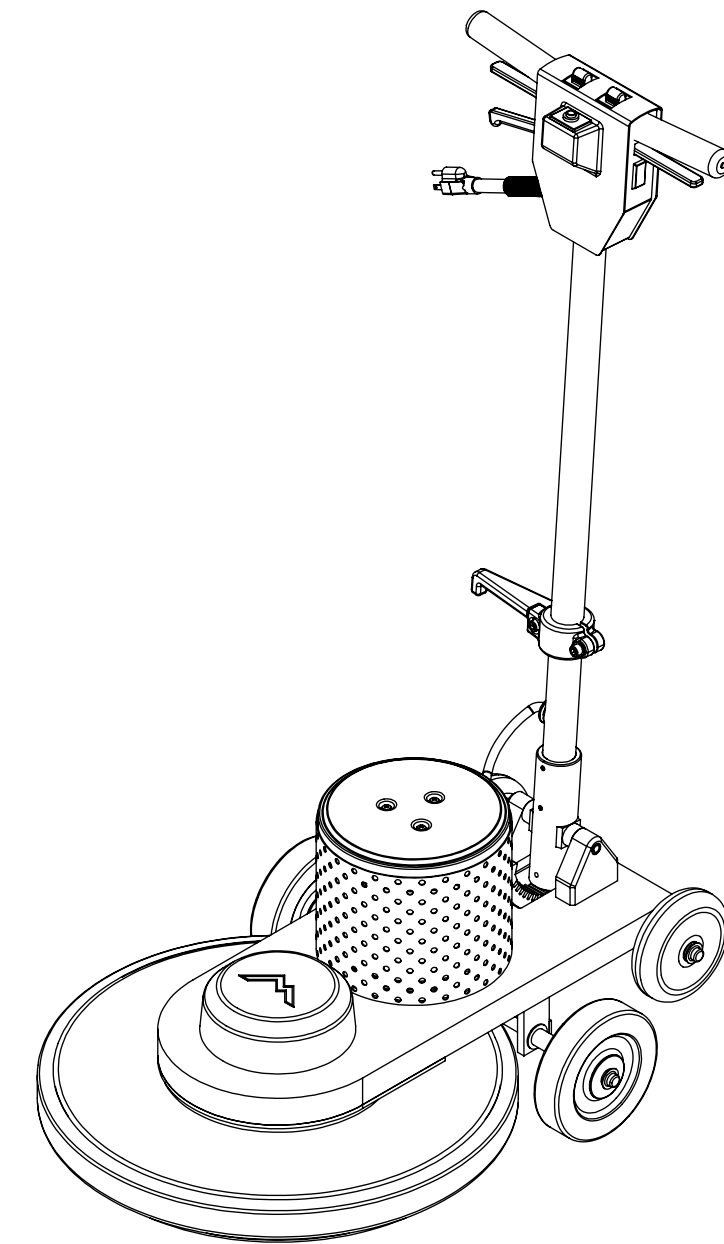


ITEM NO.	PART NUMBER	DESCRIPTION	QTY.	MSRP
1	H230	screw, 10-32 x 1/2" phil pan head, s/s	6	\$0.99
2	H143	motor cover, floor machine	1	\$25.99 ea
3	E621-53	cable, SJO, 4 conductor	1	\$8.99/ft
4	C331	motor, "B-1750" units, 1.5 HP, 115V	1	\$1038.99 ea
5	H115	wrap, preforated metal, burnisher motor	1	\$34.49 ea
6	H114	spring, motor wrap	2	\$0.99 ea
7	P550	cover, bearing, burnisher	1	\$4.99 ea
8	H112	H112-13 x 3.5", hex head, zinc	4	\$0.99
9	H364	bearing, burnisher	2	\$84.99 ea
10	H362	pulley, motor, burnisher	1	\$32.99 ea
11	H366	pulley, pad driver, burnisher	1	\$46.99 ea
12	P540	spacer, bell housing/chassis	4	\$0.99 ea
13	H254	washer, axle, cut 1/2" id	4	\$0.99 ea
14	H365	belt, 10 groove, 22.5"	1	\$124.99 ea
15	H341	handle pivot, floor machine	1	\$74.99 ea
16	H841	support, pivot, floor machine	2	\$21.99 ea
17	H702	roll pin, 1 3/4" x 1/2", pivot, floor machine	2	\$0.99
18	H705	bolt, guide, locking piston	1	\$0.99
19	H847	bushing, locking piston	1	\$17.99 ea
20	H148	washer, 5/16", narrow	8	\$0.99
21	H421	washer, 5/16" lock, s/s	11	\$0.99 ea
22	H151	bolt, 5/16-18 x 3/4" Long SHCS	10	\$0.99
23	H157	spring, handle adjustment	1	\$5.99 ea
24	H844	locking piston, handle adj.	1	\$19.99 ea
25	H152	retaining ring, internal 1 1/2"	1	\$0.99
26	H843	locking arc, handle adj, floor machine	1	\$51.99 ea
27	H873	chassis, burnisher	1	\$143.99 ea
28	H241	axle, 13.88" x .50" dia	1	\$15.99 ea
29	H427	washer, wave, 5806-60-3	2	\$1.49 ea
30	H170	wheel, 5"	2	\$11.99 ea
31	H219	cap, axle, 1/2"	4	\$0.99 ea
32	H083	axle, 19" x .50" dia, fb	1	\$11.99 ea
33	H212	washer, 9/16" id x 1" od, flat, s/s	4	\$0.99 ea
34	H279	wheel, 6"	2	\$25.99 ea
35	PH615-2.5	sol hose, 1/2" kuri 100psi	2	\$8.99/ft
36	H437	bolt, 1/4-20 x 8", hex head, zinc	2	\$0.99 ea
37	H374	bracket, motor mount, burnisher	2	\$4.99 ea
38	H216	nut, lock, 1/4-20, nylon insert, s/s	3	\$0.99
39	H384	washer, 3/8 flat, s/s	6	\$0.99
40	H468	bolt, 3/8-16 x 5/8", hex, zinc	4	\$0.99
41	H609	bell housing, 20"	1	\$64.99 ea
42	G041	bumper, 20", floor machine	1	\$31.99 ea
43	H210	washer, 1/4" flat, s/s	8	\$0.99
44	H213	washer, 1/4" lock, s/s	8	\$0.99
45	H202	bolt, 1/4x20x3/4" hex head	8	\$0.99
46	H921	nut, lock 1/2" x 13	4	\$0.99
47	H363	shaft, pad driver, burnisher	1	\$57.99 ea
48	H111	screw, 1/4-28 x 3/4", countersunk, alloy	6	\$0.99
49	H134	burnisher pad holder	1	\$89.99 ea
50	P967	holder, circuit breaker, burnisher	1	\$0.99
51	E779	breaker, circuit, 20A w/ retaining nut	1	\$22.99 ea
52	H255	switch cover, DS - floor machine	1	\$30.99 ea
53	P541	lockout, floor machine	1	\$1.99 ea
54	H161	roll pin, 1 3/4" x 1/8", floor machine	2	\$0.99
55	H160	spring, switch/lever	2	\$0.99 ea
56	H855	lever, switch, floor machine	1	\$6.99 ea
57	H166	insulation, switch, floor machine	1	\$3.99 ea
58	H640	washer, internal star, 3/8" zinc	1	\$0.99
59	H215	nut, hex, 1/4-20 s/s	1	\$0.99
60	H167	switch, floor machine	1	\$13.99 ea
61	H168	spring, lockout, floor machine	1	\$1.99 ea
62	H231	screw, 10-32 x 1" phil pan	1	\$0.99

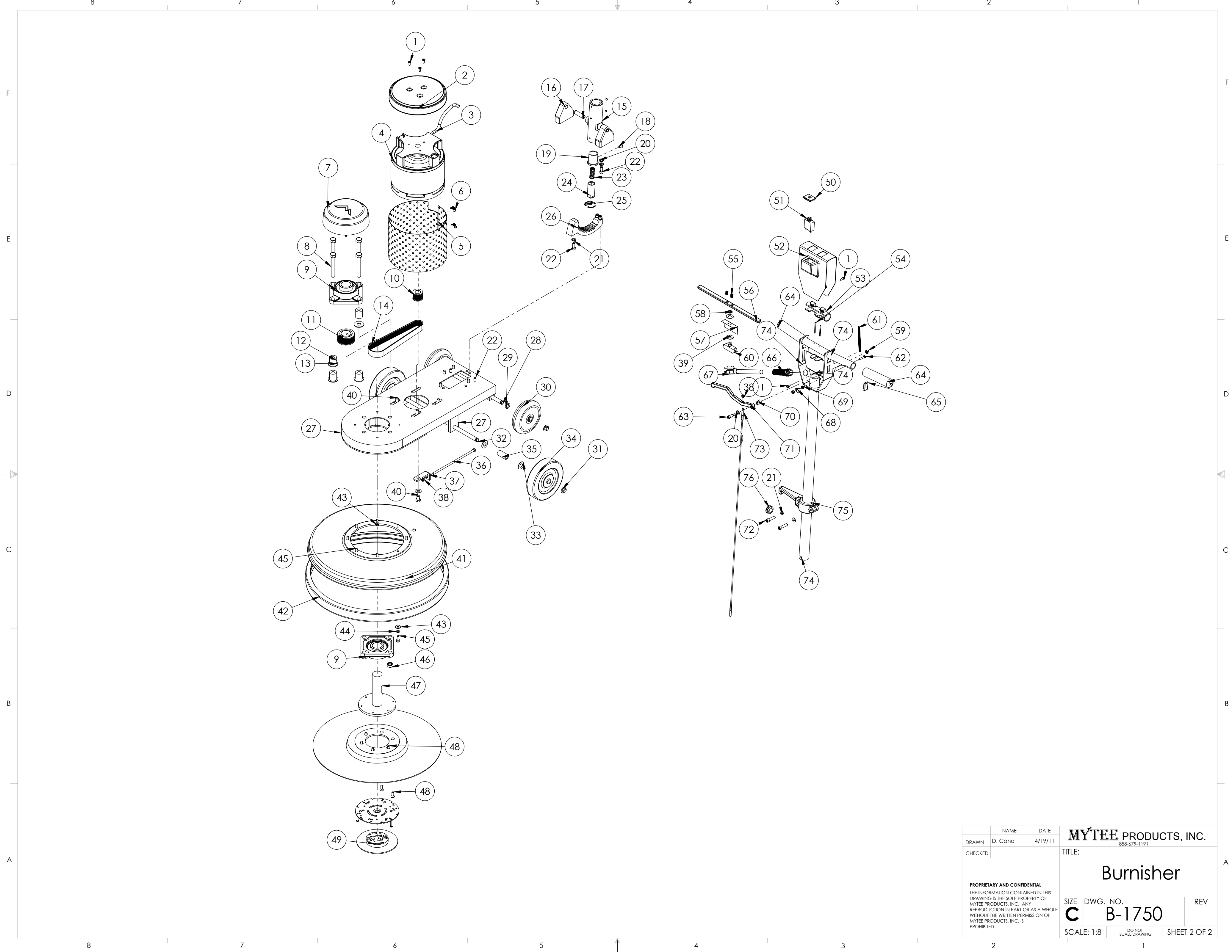
ITEM NO.	PART NUMBER	DESCRIPTION	QTY.	MSRP
63	H149	bolt, 5/16 shldr x 5/8" w/ 1/4-20 thrd	1	\$0.99
64	G040	grip, handle, floor machine	2	\$1.99 ea
65	P524	plug, plastic, floor machine handle	1	\$0.99 ea
66	H144	strain relief, power cord, floor machine	1	\$6.99 ea
67	E789	50' 14/3 Extension cord - Yellow	1	\$49.99 ea
68	H916	clip, cord, 5/16", nylon	1	\$0.99 ea
69	H273	nut, kep, #10-32 zinc	2	\$0.99 ea
70	P529	spacer, lever, handle adj.	1	\$1.99 ea
71	H839	lever, handle adj., floor machine	1	\$7.99 ea
72	H150	bolt, 5/16-18 x 1 1/4" Long SHCS	2	\$0.99
73	H159A	cable, handle adj, burnisher	1	\$6.99 ea
74	H849A	handle, burnisher	1	\$89.99 ea
75	H165	cord, hook, floor machine	1	\$23.99 ea
76	H164	grommet, floor machine, 3/16" groove	1	\$1.99 ea

ITEMS NOT SHOWN

PART NO.	DESCRIPTION	QTY.	MSRP
AD127	stop sign, register your product.	1	



	NAME	DATE	MYTEE PRODUCTS, INC. 858-679-1191	
DRAWN	D. Cano	2/16/12	TITLE:	
CHECKED			Burnisher	
PROPRIETARY AND CONFIDENTIAL THE INFORMATION CONTAINED IN THIS DRAWING IS THE SOLE PROPERTY OF MYTEE PRODUCTS, INC. ANY REPRODUCTION IN PART OR AS A WHOLE WITHOUT THE WRITTEN PERMISSION OF MYTEE PRODUCTS, INC. IS PROHIBITED.			SIZE	DWG. NO.
			C	B-1750
			SCALE: 1:8	DO NOT SCALE DRAWING
			SHEET 1 OF 2	



	NAME	DATE	MYTEE PRODUCTS, INC.			
DRAWN	D. Cano	4/19/11	858-679-1191			
CHECKED			TITLE:			
PROPRIETARY AND CONFIDENTIAL THE INFORMATION CONTAINED IN THIS DRAWING IS THE SOLE PROPERTY OF MYTEE PRODUCTS, INC. ANY REPRODUCTION IN PART OR AS A WHOLE WITHOUT THE WRITTEN PERMISSION OF MYTEE PRODUCTS, INC. IS PROHIBITED.			<h1>Burnisher</h1>			
			SIZE	DWG. NO.	REV	
			C	B-1750		
			SCALE: 1:8	DO NOT SCALE DRAWING	SHEET 2 OF 2	