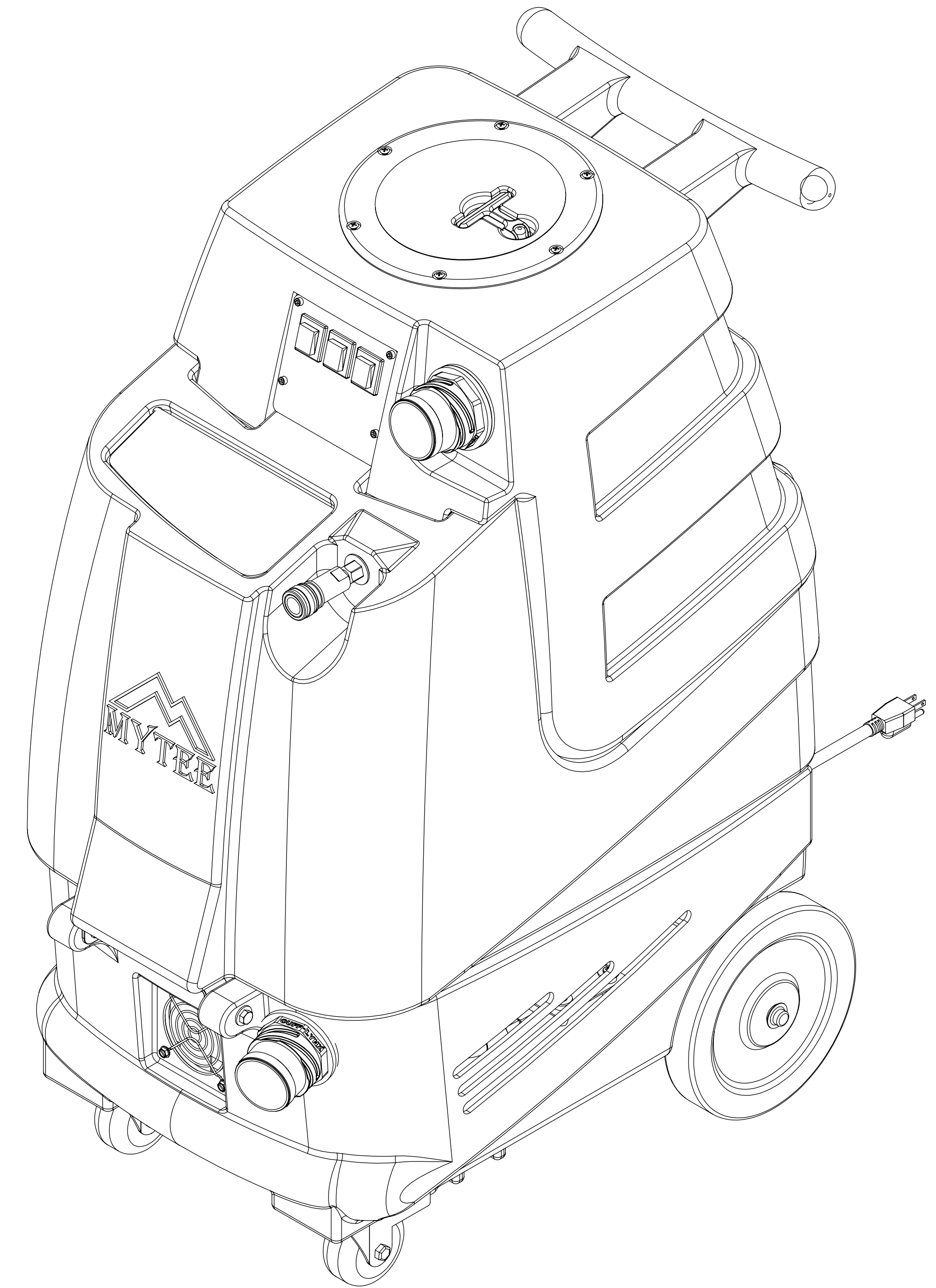


ITEM NO.	PART NO.	DESCRIPTION	QTY.	MSRP
1	H273	nut, kep, #10-32 zinc	6	\$0.99 ea
2	H230	screw, 10-32 x 1/2 phil pan	2	\$0.99 ea
3	H528	bracket, heater mounting, dual	1	\$29.99 ea
4	E571	heating rod, 600W, 115V	2	\$49.99 ea
5	H275	6-32 x 3/16 p-pan internal sem zinc	8	\$0.99 ea
6	H274	screw, #6 x 3/16, phil pan head, self-tapping	2	\$0.99 ea
7	E574	Thermostat, 310°F ± 10°F, Manual, 1/4"	2	\$17.99 ea
8	E573	Thermostat, 200°, Auto, 1/4"	2	\$16.49 ea
9	H903A	heater, aluminum cast, single	2	\$78.99 ea
10	B103	elbow, brass, 90 deg, 1/4"mpt x 1/4" fpt	5	\$4.49 ea
11	AH108S	sol hose, 1/4" x 24 1/2", (OAL), f x fsw, 3000psi	1	\$26.49 ea
12	AH156	hose, 3/8" x 6.5", (OAL), f x fsw, 5400 Gray	1	\$23.99 ea
13	B207	elbow, brass, 90 deg, 1/4" fpt x 1/4" fpt	1	\$5.99 ea
14	B108	valve, brass, 1/4" check	1	\$13.99 ea
15	AH103	hose, 3/8" x 10", (OAL), f x fsw, surge, 1600psi	1	\$30.49 ea
16	B136	elbow, brass, 90 deg, 1/4" mpt x 1/4" mpt	1	\$4.99 ea
17	B105	bushing, brass, 3/8"mpt x 1/4"	1	\$3.19 ea
18	C305	pump, 120psi, demand, 115V	1	\$151.99 ea
19	B172	elbow, brass, 90 deg, 1/2" barb x 3/8"mpt	1	\$9.49 ea
20	PH615	sol hose, 1/2" kuri 100psi	1	\$8.99 ea
21	H347	clamp, hose, 5/16-29/32	4	\$1.99 ea
22	B160	adapter, brass, 1/2" barb x 3/8" fsw, ball end	1	\$3.49 ea
23	H217	clamp, hose, 2-1/4 dia	3	\$1.49 ea
24	PH627	vac hose, 1-1/2", wire reinforced	1	\$6.49 ea
25	H300	cuff, black 1-1/2"	1	\$5.99 ea
26	H770	bolt, 1/4-20 x 1/2" serrated hex flange, zinc	11	\$0.99 ea
27	C302	vac motor, 3 stage, 120V, tangential	1	\$139.99 ea
28	H343	screw, #10 x 5/8" hex head, zinc	9	\$0.99 ea
29	G004	gasket, vacuum motor	1	\$8.99 ea
30	H501	vac support, 3 stage, 4-1/16"	3	\$4.99 ea
31	H330	plate, single manifold, 6.5" x 9"	1	\$7.99 ea
32	H204	bolt, 1/4-20 x 1-3/4" hex head, s/s	3	\$0.99 ea
33	H201	bolt, 1/4-20 x 1/2", hex head, zinc	2	\$0.99 ea
34	P735	manifold, single vac, no gasket	1	\$14.99 ea
35	H768	bolt, 1/4-20 x 3/4" serrated hex flange, zinc	3	\$0.99 ea
36	H216	nut, lock, 1/4-20, nylon insert, s/s	13	\$0.99 ea
37	H222	screw, #10-32 x 1-1/4" phil pan head, zinc	4	\$0.99 ea
38	H210	washer, 1/4" flat, s/s	16	\$0.99 ea
39	PH628	vac hose, 2", wire reinforced	1	\$8.99/ft
40	H020	nut, lock, 2", steel	1	\$4.99 ea
41	H135	Cuff-Lynx, 2" m cuff x 2" mpt	2	\$3.99 ea
42	H229	fitting, inlet, pvc, 1-1/2", gray	1	\$5.99 ea
43	H667	caster, 3", Black Hub, Gray Tread	2	\$14.99 ea
44	H342	bolt, 1/4-20 x 1" hex head, s/s	8	\$0.99 ea
45	H296	guard, cooling fan, wire	2	\$2.99 ea
46	P756	base, firebird	1	\$147.99
47	H221	nut, lock, 1/2" steel	1	\$1.99 ea
48	H220	fitting, strain relief, cord	1	\$3.19 ea
49	E531	power cord, end, 25', 12/3 black	1	\$52.99 ea
50	H254	washer, axle, cut 1/2" id	4	\$0.99 ea
51	H224	axle, 17.50" x .50" dia, fb	1	\$9.99 ea
52	H239	wheel, 8"	2	\$28.99 ea
53	H219	cap, axle, 1/2"	2	\$0.99 ea
54	P757	sol tank, firebird	1	\$149.99 ea
55	G061	cover, sol tank, fb	1	\$12.99 ea
56	H215	nut, hex, 1/4-20, s/s	2	\$0.99 ea
57	H213	washer, 1/4" lock, s/s	4	\$0.99 ea
58	H211	washer, 1/4" id x 1" od, flat, s/s	4	\$0.99 ea
59	G052	washer, buna 1-1/8" od x 3/16" id	4	\$1.99 ea
60	H203	bolt, 1/4-20 x 1-1/4" hex head	2	\$0.99 ea
61	H316	bolt, 1/4-20 x 1-1/2" hex head, s/s	2	\$0.99 ea
62	H378	bracket, front hinge, sp/fb	1	\$8.99 ea
63	B119A	filter, strainer, 1/2"	1	\$6.49 ea
64	B210	bushing, brass, 1/2"mpt x 3/8" fpt, hex	1	\$2.49 ea
65	H299	washer, 11/16" id x 1-1/2" od x .075, s/s	4	\$0.99 ea
66	B216	nipple, brass, 3/8" x close	1	\$1.99 ea
67	B186	elbow, brass, 90 deg, 3/8"mpt x 3/8" fmpt	1	\$8.99 ea
68	B111	adapter, brass, extender, 1/4" mpt x 1/4" fpt, hex	1	\$3.49 ea
69	H212	washer, 9/16" id x 1" od, flat, s/s	4	\$0.99 ea
70	B102	qd, brass, 1/4" f	1	\$17.99 ea
71	H413	washer, nylon, 9/16" id x 1-1/16" od x .031	2	\$0.99 ea
72	B107	nipple, brass, 1/4"m, hex	2	\$3.19 ea
73	AH105	hose, 3/8" x 17-1/2", (OAL), f x -fsw, surge, 1600psi	1	\$31.99 ea
74	H912	bracket, rear, fb/spy	1	\$9.99 ea
75	H244	adapter, pvc, 1-1/2" fms x fmpt	1	\$4.99 ea
76	PH633-11	pipe, pvc, 1-1/2"	1	\$4.99/ft
77	H297	screw, #8 x 1/2", hex head, zinc	3	\$0.99 ea
78	P755	elbow, U, 180, 1-1/2", float	1	\$8.99 ea
79	H235	float, 1.5", ball style	1	\$19.99 ea
80	G091	gasket, 7", vac lid	1	\$11.99 ea

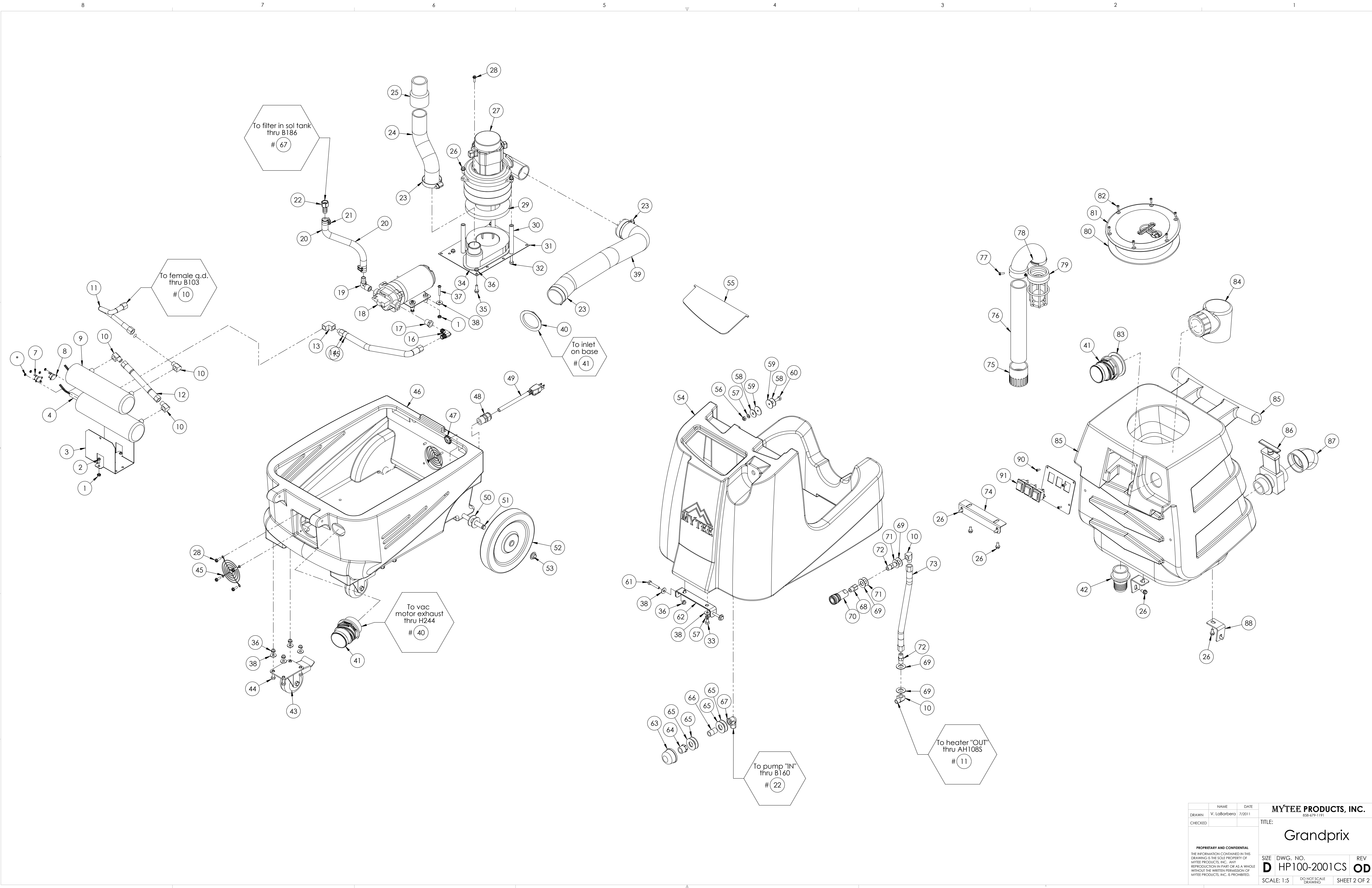
ITEM NO.	PART NO.	DESCRIPTION	QTY.	MSRP
81	G090	lid, vac tank, black, 7"	1	\$36.99 ea
82	H304	screw, #8 x 5/8 phil oval, s/s	6	\$0.99 ea
83	G002	gasket, cam fitting polyethylene, 2.35" OD 1.90" ID	1	\$6.49 ea
84	A926	elbow, inlet assembly 2"	1	\$15.99 ea
85	P758	vac tank, firebird	1	\$186.99 ea
86	H225	valve, drain, 1-1/2"	1	\$20.99 ea
87	H226	spout, drain, 45 degree	1	\$3.19 ea
88	H390A	bracket, "L" (all extractors)	2	\$6.99 ea
89	H326	plate, switch, 3 hole, fb	1	\$6.99 ea
90	H246	screw, #8-32 x 3/8" SHCS, alloy	4	\$0.99 ea
91	E515	switch, rocker, 2 position	3	\$13.99 ea

**ITEMS NOT SHOWN:**

PART NO.	DESCRIPTION	QTY.	MSRP
ADM-HP60	manual, spyder	1	
AD127	stop sign, register your product	1	
A935	sol hose, pig tail, 1/8" x 7 1/2"	1	\$14.99 ea
A942	sol hose, 1/4" x 16', 3000 psi	1	\$71.99 ea
B101	quick disconnect, male, 1/4" male x 1/4" fpt	2	\$8.49 ea
B102	quick disconnect, 1/4" female x 1/4" fpt	1	\$17.99 ea
G008	piglet filter	1	\$6.29 pak
G029	banana bag, mesh bag, yellow	1	\$3.99 ea
G085	gasket, strip, 3/4" x 36" x 1/8"	1	\$4.99 ea
G147	strap, velcro, w/buckle	5	\$3.49 ea
H230	screw, 10-32 x 1/2" phil pan head, s/s	4	\$0.99 ea
H282	tool, upholstery, s/s w/valve	1	\$98.99 ea
H375	hanger, wire formed, hose	2	\$10.99 ea
H701	hose, vac, 15' x 1-1/4" w/1-1/2" black cuffs	1	\$44.99 ea



NAME	DATE	<b>MYTEE PRODUCTS, INC.</b> <small>888-679-1191</small>
V. LaBarbera	7/2011	
TITLE:	<b>Grandprix</b> <b>D HP100-2001CS OD</b>	
<small>PROPRIETARY AND CONFIDENTIAL</small> <small>THE INFORMATION CONTAINED IN THIS DRAWING IS THE SOLE PROPERTY OF MYTEE PRODUCTS, INC. ANY REPRODUCTION IN PART OR AS A WHOLE WITHOUT THE WRITTEN PERMISSION OF MYTEE PRODUCTS, INC. IS PROHIBITED.</small>	<small>SCALE: 1:3</small> <small>DO NOT SCALE DRAWING</small>	<small>REV</small> <small>SHEET 1 OF 2</small>



NAME	DATE	<b>MYTEE PRODUCTS, INC.</b> <small>850-679-1191</small>
DRAWN V. LaBarbera	7/2011	
CHECKED		TITLE: <b>Grandprix</b>
<small>PROPRIETARY AND CONFIDENTIAL          THE INFORMATION CONTAINED IN THIS DRAWING IS THE SOLE PROPERTY OF MYTEE PRODUCTS, INC. ANY REPRODUCTION IN PART OR AS A WHOLE WITHOUT THE WRITTEN PERMISSION OF MYTEE PRODUCTS, INC. IS PROHIBITED.</small>		SIZE DWG. NO. <b>D HP100-2001CS</b> REV <b>OD</b> SCALE: 1:5 DO NOT SCALE DRAWING SHEET 2 OF 2