

REVISIONS				
ZONE	REV.	DESCRIPTION	DATE	APPROVED
	A	REPLACED H212 WITH H876	5/5/04	
	B	NEW STACK DESIGN W/ FLOAT CAGE	6/28/04	

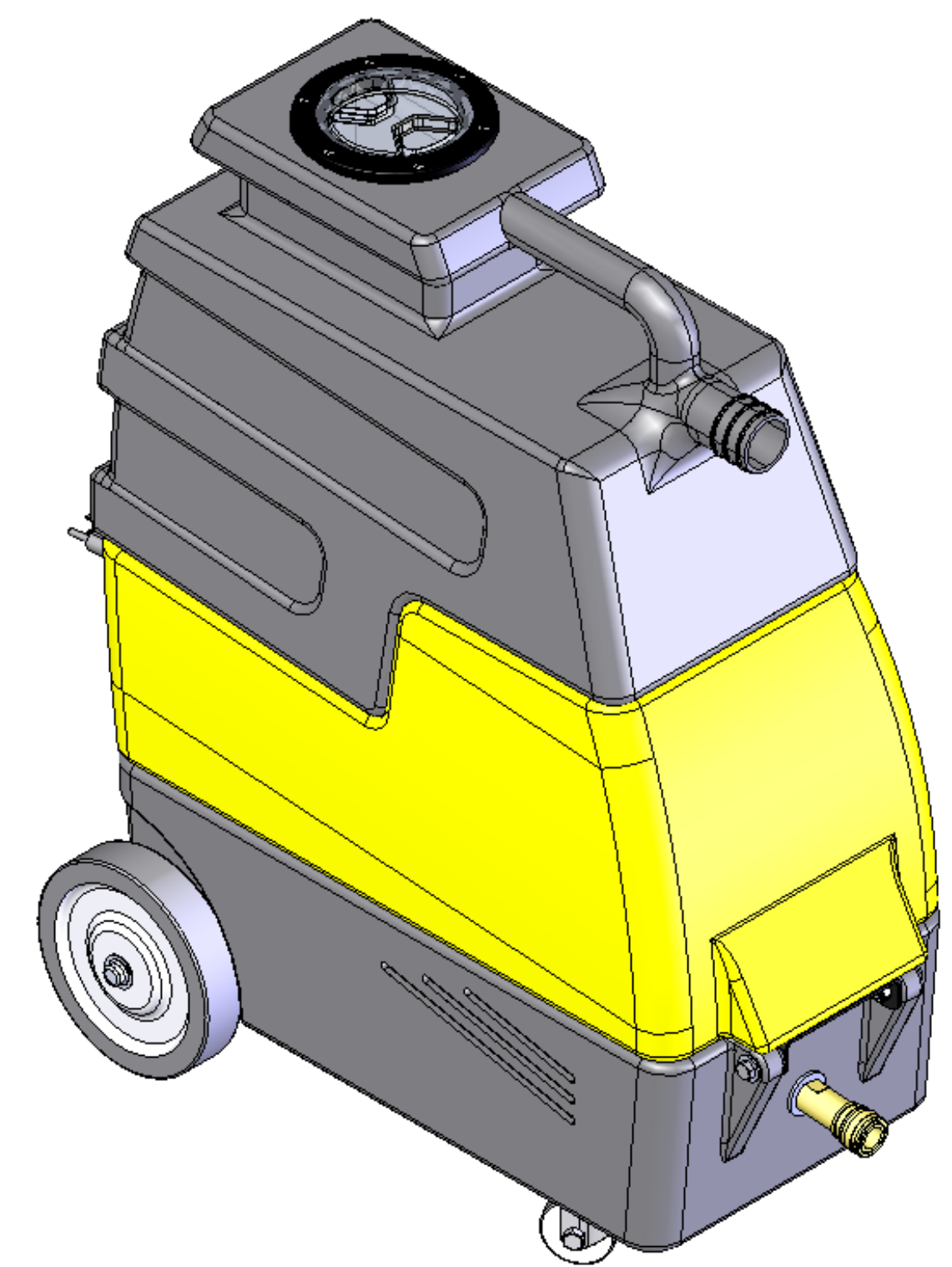
ITEM NO.	QTY.	PART NO.	DESCRIPTION	ITEM NO.	QTY.	PART NO.	DESCRIPTION
1	1	P788	BASE, MYTEE LITE II	58	1	H906	LATCH, REAR
2	2	H250	BRACKET, PUMP	59	4	H361	SCREW, ROUND HEAD, #6-32 x 1/2" LG.
3	16	H289	WASHER, FLAT, #10	60	1	G004	GASKET, VACUUM MOTOR
4	12	H256	SCREW, #10-32 x 3/4" LG. PHIL. PAN HEAD				
5	12	H273	KEP-NUT, #10-32, ZINC	61	1	C301	MOTOR, 2 STAGE 115V
6	1	C308	PUMP, 55psi, 115V, 1/8" NPT	62	1	H217	HOSE CLAMP
7	2	B112	1/8" X1/4" HEX ADAPTER	63	1	G059	EXHAUST BOOT, PLASTISOL
8	2	B130	45 DEG 1/4" M x FM	64	1	H914	SPACER, MOTOR MOUNT
9	3	B110	FITTING, 1/4 BARB x 1/4 FM SWIVEL	65	1	H288	BOLT, HEX HD., 1/4-20 x 3" LG.
10	2	PH634-18	HOSE, 1/4" KURITEK x 18" LG.	66	2	H206	SCREW, HEX HD., SELF-TAPPING, #10-32 x 1/2" LG.
11	2	B103	90 DEG 1/4" M x FM	67	1	B119	FILTER STRAINER, 1/4"
12	1	AH103	HOSE, 3/8" SURGE x 8-3/4" LG.	68	1	B107	NIPPLE, 1/4" HEX
13	1	B108	CHECK VALVE, 1/4"	69	1	B111	ADAPTER, 1/4" M x 1/4" FM
14	1	B207	90 DEG 1/4" FM x FM	70	1	G021	SCREEN, FILTER, 2-3/8" DIA.
15	1	H850	HEATER, SINGLE 2" x 8-1/4"	71	1	G075	GASKET
16	1	G156	INSULATION				
17	1	H272	CLAMP, HEATER (5-1/2")				
18	1	E576	HEATING ROD, 900W, 115V				
19	1	E574	THERMOSTAT, 375 DEG MANUAL				
20	4	H919	NUT, HEX, #4-40				
21	1	E573	THERMOSTAT, 210 DEG AUTO				
22	1	B113	1/4" TEE (ALL FEMALE)				
23	1	AH158-M	HOSE, 3/8" PULSE x 6-1/2" LG.				
24	1	B124	VALVE, 175 psi RELIEF				
25	1	B152	90 DEG 1/4" BARB x 1/4" MPT				
26	4	H876	1/2" FLAT WASHER				
27	2	H413	WASHER, NYLON				
28	2	B106	NIPPLE, 1/4" CLOSE				
29	1	B102	QUICK DISCONNECT, 1/4" FEMALE				
30	1	PH620-12.75	AXLE, 1/2" x 12-3/4" LG.				
31	2	H219	1/2" AXLE CAP				
32	2	H254	WASHER, AXLE, 5/8" ID				
33	2	H279	WHEEL, 6"				
34	2	H681	CASTER, 2" DIA.				
35	1	H904	BRACKET, REAR				
36	2	H230	SCREW, #10-32 x 1/2" LG. PHIL. PAN HD.				
37	1	H905	THUMB SCREW, BLACK PLASTIC				
38	1	H856	FITTING, STRAIN RELIEF 3/8" NPT				
39	1	E532	POWER CORD, GREY, 14ga, 25'				
40	1	H636	3-HOLE SWITCH PLATE				
41	4	H297	SCREW, SELF-TAPPING, #8 x 1/2" LG.				
42	3	E592	SWITCH, RED LIGHTED				
43	1	P789	RECOVERY TANK, MYTEE LITE II				
44	1	H644	ADAPTER, PVC				
45	1	PH610-06	PIPE, 3/4, PVC, 6" LG.				
46	1	H899	FITTING, PVC, 90 DEG MOD., 3/4" PIPE				
47	1	H900-A	FITTING, PVC, 45 DEG, 3/4" PIPE, MODIFIED				
48	1	H235-A	FLOAT CAGE, MODIFIED				
49	1	G039	GASKET, VAC TANK LID				
50	1	G030	VACUUM LID BASE AND COVER				
51	6	H304	SCREW, #8-32 x 5/8" LG. PHIL. OVAL				
52	1	P787 (A8070)	SOLUTION TANK, MYTEE LITE II				
53	1	H379	BRACKET, FRONT HINGE				
54	2	H770	BOLT, 1/4-20 x 1/2" LG. SERRATED FLANGE				
55	3	H210	WASHER, FLAT, 1/4"				
56	2	H203	HEX BOLT, 1/4-20 x 1-1/4" LG.				
57	2	H216	LOCKNUT, 1/4-20 HEX, NYLON INSERT				

ADDITIONAL COMPONENTS NOT SHOWN:

ELECTRICAL COMPONENTS
L911 - LABEL SET, MYTEE LITE II

MACHINE ALSO COMES
EQUIPPED WITH A 3" UPHOLSTERY
TOOL, A 15' VACUUM HOSE, AND
A 15' SOLUTION HOSE:

- A935 (1): 5-1/2" PIGTAIL HOSE
- A942 (1): 15' SOLUTION HOSE
- B101 (2): 1/4" MALE QUICK DISCONNECT
- B102 (1): 1/4" FEMALE QUICK DISCONNECT
- B104 (1): 1/4" ADAPTER (MPT x FMPT)
- B146 (1): SPRAY JET
- G147 (5): VELCRO STRAP
- H282 (1): HAND TOOL
- H295 (1): 15' VACUUM HOSE



PROPRIETARY AND CONFIDENTIAL
THE INFORMATION CONTAINED IN THIS
DRAWING IS THE SOLE PROPERTY OF
MYTEE PRODUCTS, INC. ANY
REPRODUCTION IN PART OR AS A WHOLE
WITHOUT THE WRITTEN PERMISSION OF
MYTEE PRODUCTS, INC. IS PROHIBITED.

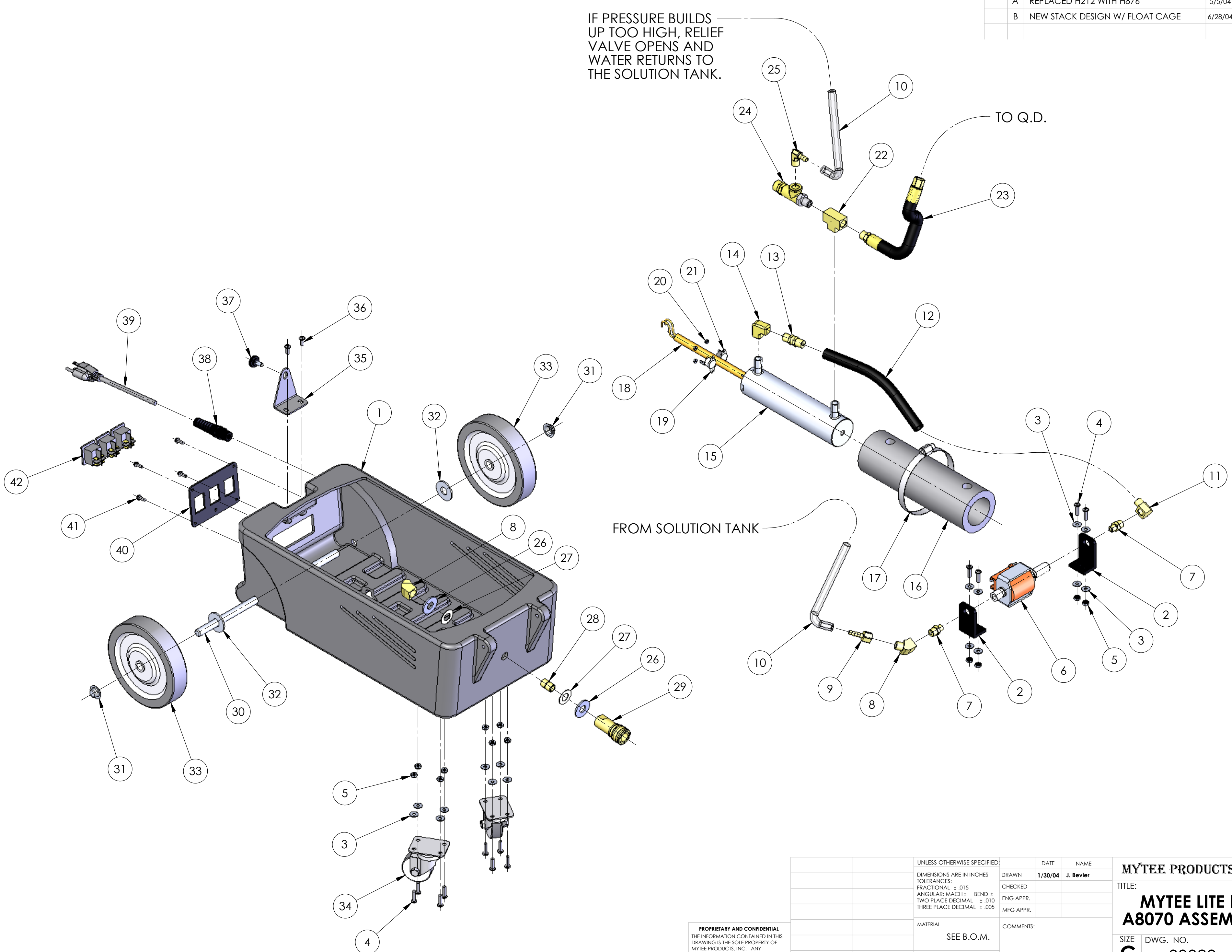
UNLESS OTHERWISE SPECIFIED:		DATE	NAME	MYTEE PRODUCTS, INC.
DIMENSIONS ARE IN INCHES		1/30/04	J. Bevier	
TOLERANCES:		DRAWN		TITLE: MYTEE LITE II, A8070 ASSEMBLY
FRACTIONAL ± .015		CHECKED		
ANGULAR: MACH ± BEND ±		ENG APPR.		
TWO PLACE DECIMAL ± .010		MFG APPR.		SIZE DWG. NO. REV
THREE PLACE DECIMAL ± .005		COMMENTS:		C 00022 B
MATERIAL				SCALE: 1:4 DO NOT SCALE DRAWING SHEET 1 OF 3
SEE B.O.M.				
FINISH				
NEXT ASSY	USED ON			
APPLICATION				

REVISIONS				
ZONE	REV.	DESCRIPTION	DATE	APPROVED
A		REPLACED H212 WITH H876	5/5/04	
B		NEW STACK DESIGN W/ FLOAT CAGE	6/28/04	

IF PRESSURE BUILDS UP TOO HIGH, RELIEF VALVE OPENS AND WATER RETURNS TO THE SOLUTION TANK.

TO Q.D.

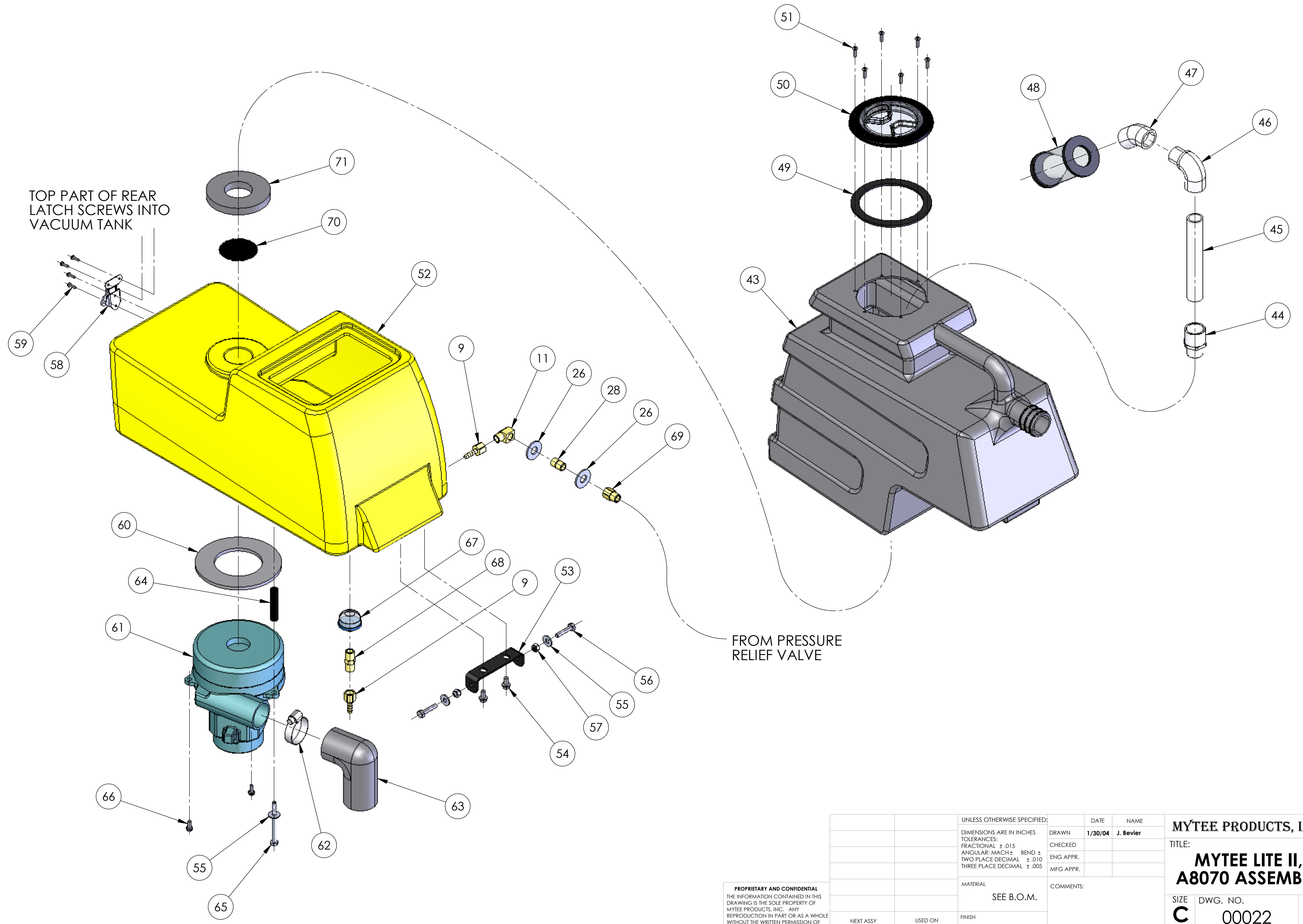
FROM SOLUTION TANK



PROPRIETARY AND CONFIDENTIAL
 THE INFORMATION CONTAINED IN THIS DRAWING IS THE SOLE PROPERTY OF MYTEE PRODUCTS, INC. ANY REPRODUCTION IN PART OR AS A WHOLE WITHOUT THE WRITTEN PERMISSION OF MYTEE PRODUCTS, INC. IS PROHIBITED.

UNLESS OTHERWISE SPECIFIED:		DATE	NAME	MYTEE PRODUCTS, INC. TITLE: MYTEE LITE II, A8070 ASSEMBLY SIZE C DWG. NO. 00022 REV B SCALE: 1:4 DO NOT SCALE DRAWING SHEET 2 OF 3
DIMENSIONS ARE IN INCHES		DRAWN	1/30/04 J. Bevier	
TOLERANCES:		CHECKED		
FRACTIONAL: ± .015		ENG APPR.		
ANGULAR: MACH ±		MFG APPR.		
TWO PLACE DECIMAL ± .010		COMMENTS:		
THREE PLACE DECIMAL ± .005				
MATERIAL				
SEE B.O.M.				
FINISH				
NEXT ASSY	USED ON			
APPLICATION				

REVISIONS				
ZONE	REV.	DESCRIPTION	DATE	APPROVED
	A	REPLACED H212 WITH H876	5/5/04	
	B	NEW STACK DESIGN W/ FLOAT CAGE	6/28/04	



TOP PART OF REAR LATCH SCREWS INTO VACUUM TANK

FROM PRESSURE RELIEF VALVE

PROPRIETARY AND CONFIDENTIAL
THE INFORMATION CONTAINED IN THIS DRAWING IS THE SOLE PROPERTY OF MYTEE PRODUCTS, INC. ANY REPRODUCTION IN PART OR AS A WHOLE WITHOUT THE WRITTEN PERMISSION OF MYTEE PRODUCTS, INC. IS PROHIBITED.

UNLESS OTHERWISE SPECIFIED:		DATE	NAME	MYTEE PRODUCTS, INC.
DIMENSIONS ARE IN INCHES TOLERANCES: FRACTIONAL ± .015 ANGULAR: MACH ± .010 BEND ± .010 THREE PLACE DECIMAL ± .005		1/30/04	J. Bevier	
MATERIAL		COMMENTS:		TITLE:
SEE B.O.M.				MYTEE LITE II, A8070 ASSEMBLY
NEXT ASSY	USED ON	FINISH	USED ON:	SIZE DWG. NO. REV
				C 00022 B
APPLICATION			SCALE: 1:4	DO NOT SCALE DRAWING SHEET 3 OF 3