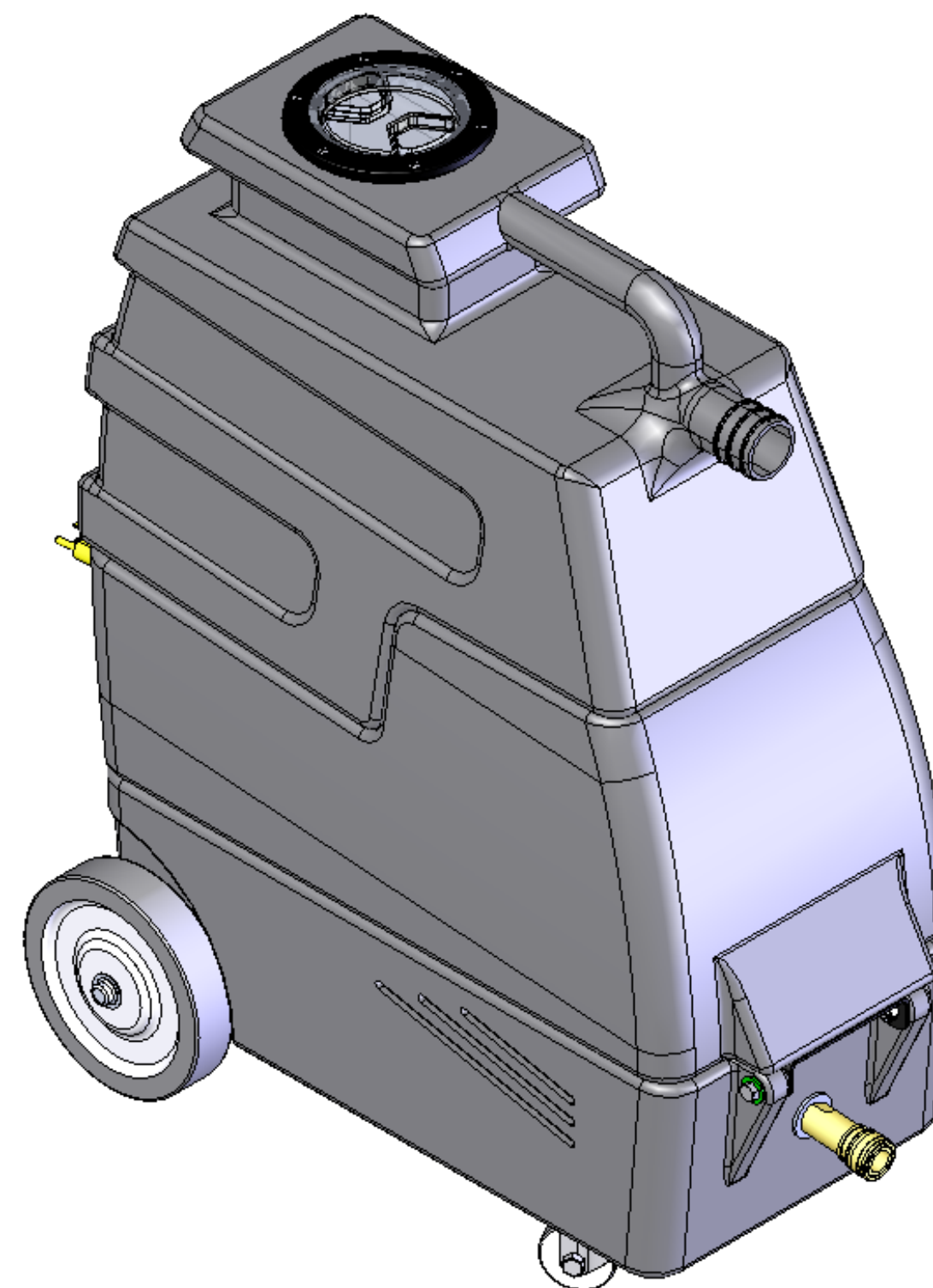


ITEM NO.	QTY.	PART NO.	DESCRIPTION
1	1	P788	BASE, MYTEE LITE II
2	2	H250	BRACKET, PUMP
3	16	H289	WASHER, FLAT, #10
4	12	H256	SCREW, #10-32 x 3/4" LG. PHIL. PAN HEAD
5	12	H273	KEP-NUT, #10-32, ZINC
6	1	C308	PUMP, 55psi, 115V, 1/8" NPT
7	2	B112	1/8" X1/4" HEX ADAPTER
8	2	B130	45 DEG 1/4" M x FM
9	2	B110	FITTING, 1/4 BARB x 1/4 FM SWIVEL
10	1	PH634-18	HOSE, 1/4" KURITEK x 18" LG.
11	1	B103	90 DEG 1/4" M x FM
12	1	AH103	HOSE, 3/8" SURGE x 8-3/4" LG.
13	2	H876	1/2" FLAT WASHER
14	2	H413	WASHER, NYLON
15	1	B106	NIPPLE, 1/4" CLOSE
16	1	B102	QUICK DISCONNECT, 1/4" FEMALE
17	1	PH620-12.75	AXLE, 1/2" x 12-3/4" LG.
18	2	H219	1/2" AXLE CAP
19	2	H254	WASHER, AXLE, 5/8" ID
20	2	H279	WHEEL, 6"
21	2	H681	CASTER, 2" DIA.
22	1	H904	BRACKET, REAR
23	2	H230	SCREW, #10-32 x 1/2" LG. PHIL. PAN HD.
24	1	H905	THUMB SCREW, BLACK PLASTIC
25	1	H856	FITTING, STRAIN RELIEF 3/8" NPT
26	1	E533	CORD, POWER, YELLOW, 25' x 16/3
27	1	H636	3-HOLE SWITCH PLATE
28	4	H297	SCREW, SLEF-TAPPING, #8 x 1/2" LG.
29	3	E592	SWITCH, RED LIGHTED
30	1	P789	RECOVERY TANK, MYTEE LITE II
31	1	H644	ADAPTER, PVC
32	1	PH610-06	PIPE, 3/4, PVC, 6" LG.
33	1	H899	FITTING, PVC, 90 DEG MOD., 3/4" PIPE
34	1	H900-A	FITTING, PVC, 45 DEG, 3/4" PIPE, MODIFIED
35	1	H235-A	FLOAT CAGE, MODIFIED
36	1	G039	GASKET, VAC TANK LID
37	1	G030	VACUUM LID BASE AND COVER
38	6	H304	SCREW, #8-32 x 5/8" LG. PHIL. OVAL
39	1	P787 (8020)	SOLUTION TANK, MYTEE LITE II
40	1	H379	BRACKET, FRONT HINGE
41	2	H770	BOLT, 1/4-20 x 1/2" LG. SERRATED FLANGE
42	3	H210	WASHER, FLAT, 1/4"
43	2	H203	HEX BOLT, 1/4-20 x 1-1/4" LG.
44	2	H216	LOCKNUT, 1/4-20 HEX, NYLON INSERT
45	1	H906	LATCH, REAR
46	4	H361	SCREW, ROUND HEAD, #6-32 x 1/2" LG.
47	1	G004	GASKET, VACUUM MOTOR
48	1	C301	MOTOR, 2 STAGE 115V
49	1	H217	HOSE CLAMP
50	1	G059	EXHAUST BOOT, PLASTISOL
51	1	H914	SPACER, MOTOR MOUNT
52	1	H288	BOLT, HEX HD., 1/4-20 x 3" LG.
53	2	H206	SCREW, HEX HD., SELF-TAPPING, #10-32 x 1/2" LG.
54	1	B119	FILTER STRAINER, 1/4"
55	1	B107	NIPPLE, 1/4" HEX
56	1	G021	SCREEN, FILTER, 2-3/8" DIA.
57	1	G075	GASKET

ADDITIONAL COMPONENTS NOT SHOWN:

ELECTRICAL COMPONENTS
L911 - LABEL SET, MYTEE LITE II

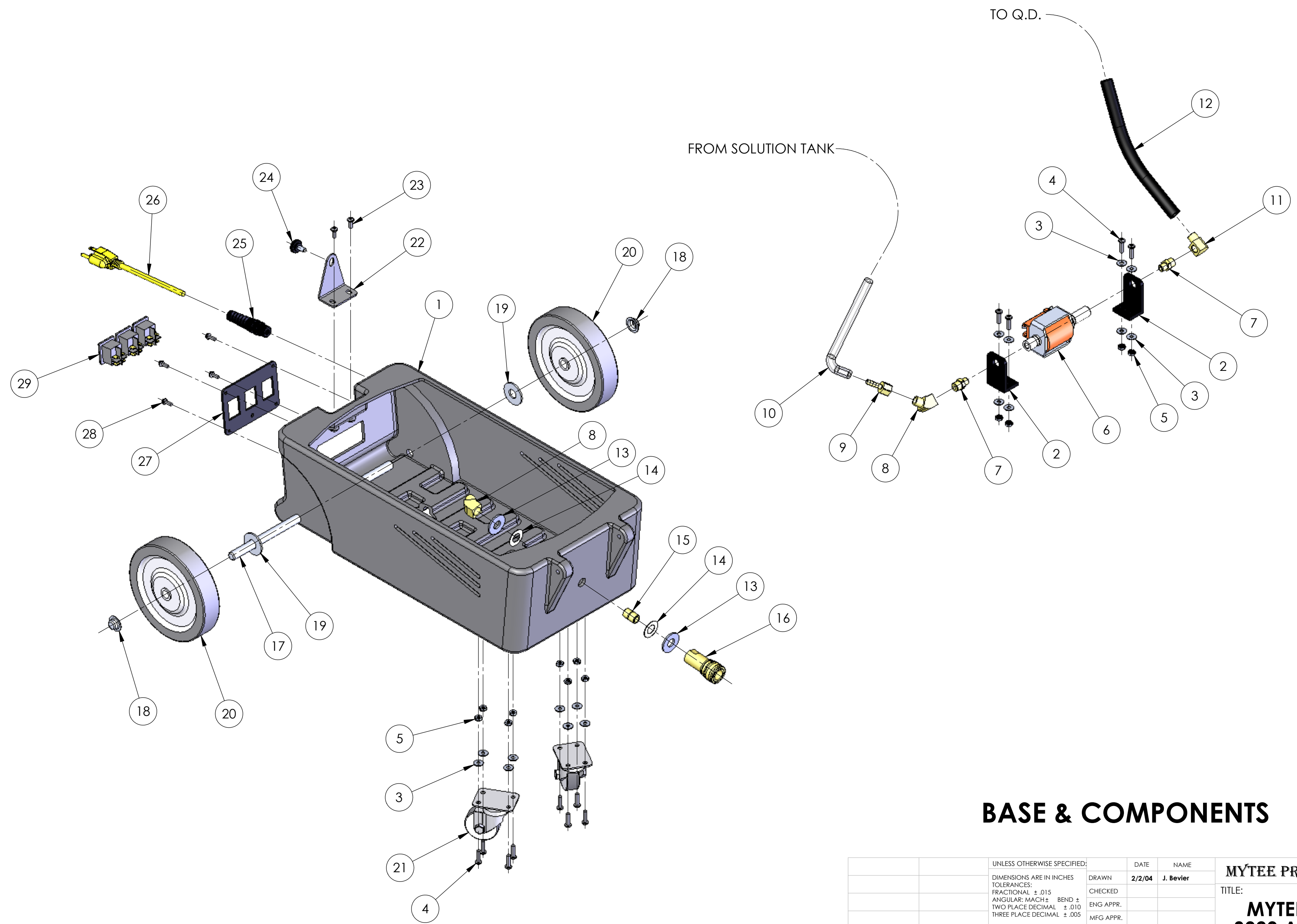


REVISIONS				
ZONE	REV.	DESCRIPTION	DATE	APPROVED
	A	CHANGED POWER CORD	2/3/04	
	B	REPLACED H212 WITH H876	5/3/04	
	C	NEW STACK DESIGN W/ FLOAT CAGE	6/24/04	

PROPRIETARY AND CONFIDENTIAL
THE INFORMATION CONTAINED IN THIS DRAWING IS THE SOLE PROPERTY OF MYTEE PRODUCTS, INC. ANY REPRODUCTION IN PART OR AS A WHOLE WITHOUT THE WRITTEN PERMISSION OF MYTEE PRODUCTS, INC. IS PROHIBITED.

UNLESS OTHERWISE SPECIFIED:		DATE	NAME	MYTEE PRODUCTS, INC. TITLE: MYTEE LITE II, 8020 ASSEMBLY SIZE C DWG. NO. 00019 REV C SCALE: 1:4 DO NOT SCALE DRAWING SHEET 1 OF 3	
DIMENSIONS ARE IN INCHES		DRAWN	2/2/04		J. Bevier
TOLERANCES:		CHECKED			
FRACTIONAL ± .015		ENG APPR.			
ANGULAR: MACH ±		MFG APPR.			
BEND ±		COMMENTS:			
TWO PLACE DECIMAL ± .010					
THREE PLACE DECIMAL ± .005					
MATERIAL		SEE B.O.M.			
FINISH					
NEXT ASSY	USED ON	USED ON:			
APPLICATION					

REVISIONS				
ZONE	REV.	DESCRIPTION	DATE	APPROVED
	A	CHANGED POWER CORD	2/3/04	
	B	REPLACED H212 WITH H876	5/3/04	
	C	NEW STACK DESIGN W/ FLOAT CAGE	6/24/04	

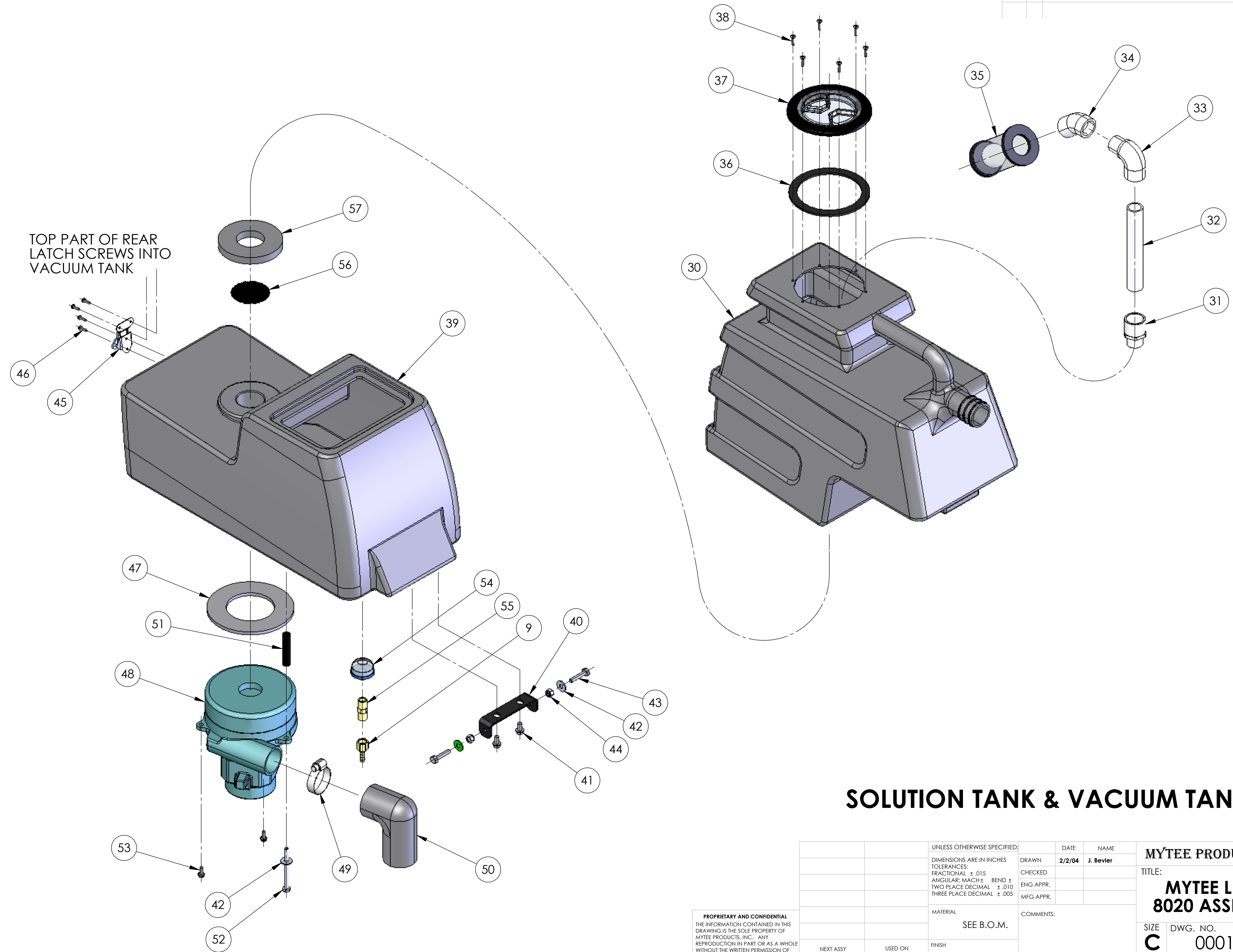


BASE & COMPONENTS

PROPRIETARY AND CONFIDENTIAL
 THE INFORMATION CONTAINED IN THIS DRAWING IS THE SOLE PROPERTY OF MYTEE PRODUCTS, INC. ANY REPRODUCTION IN PART OR AS A WHOLE WITHOUT THE WRITTEN PERMISSION OF MYTEE PRODUCTS, INC. IS PROHIBITED.

UNLESS OTHERWISE SPECIFIED:		DATE	NAME	MYTEE PRODUCTS, INC.
DIMENSIONS ARE IN INCHES TOLERANCES: FRACTIONAL: ± .015 ANGULAR: MACH ± TWO PLACE DECIMAL ± .010 THREE PLACE DECIMAL ± .005		2/2/04	J. Bevier	
MATERIAL		COMMENTS:		TITLE:
SEE B.O.M.				MYTEE LITE II, 8020 ASSEMBLY
NEXT ASSY	USED ON	FINISH	USED ON:	SIZE DWG. NO. REV
				C 00019 C
APPLICATION			SCALE: 1:4	DO NOT SCALE DRAWING SHEET 2 OF 3

REVISIONS				
ZONE	REV.	DESCRIPTION	DATE	APPROVED
	A	CHANGED POWER CORD	2/3/04	
	B	REPLACED H212 WITH H876	5/3/04	
	C	NEW STACK DESIGN W/ FLOAT CAGE	6/24/04	



SOLUTION TANK & VACUUM TANK

PROPRIETARY AND CONFIDENTIAL
 THE INFORMATION CONTAINED IN THIS DRAWING IS THE SOLE PROPERTY OF MYTEE PRODUCTS, INC. ANY REPRODUCTION IN PART OR AS A WHOLE WITHOUT THE WRITTEN PERMISSION OF MYTEE PRODUCTS, INC. IS PROHIBITED.

UNLESS OTHERWISE SPECIFIED:		DATE	NAME	MYTEE PRODUCTS, INC. TITLE: MYTEE LITE II, 8020 ASSEMBLY SIZE C DWG. NO. 00019 REV C SCALE: 1:4 DO NOT SCALE DRAWING SHEET 3 OF 3	
DIMENSIONS ARE IN INCHES		DRAWN	2/2/04		J. Bevier
TOLERANCES:		CHECKED			
FRACTIONAL ± .015		ENG APPR.			
ANGULAR: MACH ±		MFG APPR.			
TWO PLACE DECIMAL ± .010		COMMENTS:			
THREE PLACE DECIMAL ± .005					
MATERIAL		SEE B.O.M.			
FINISH					
NEXT ASSY	USED ON				
APPLICATION					