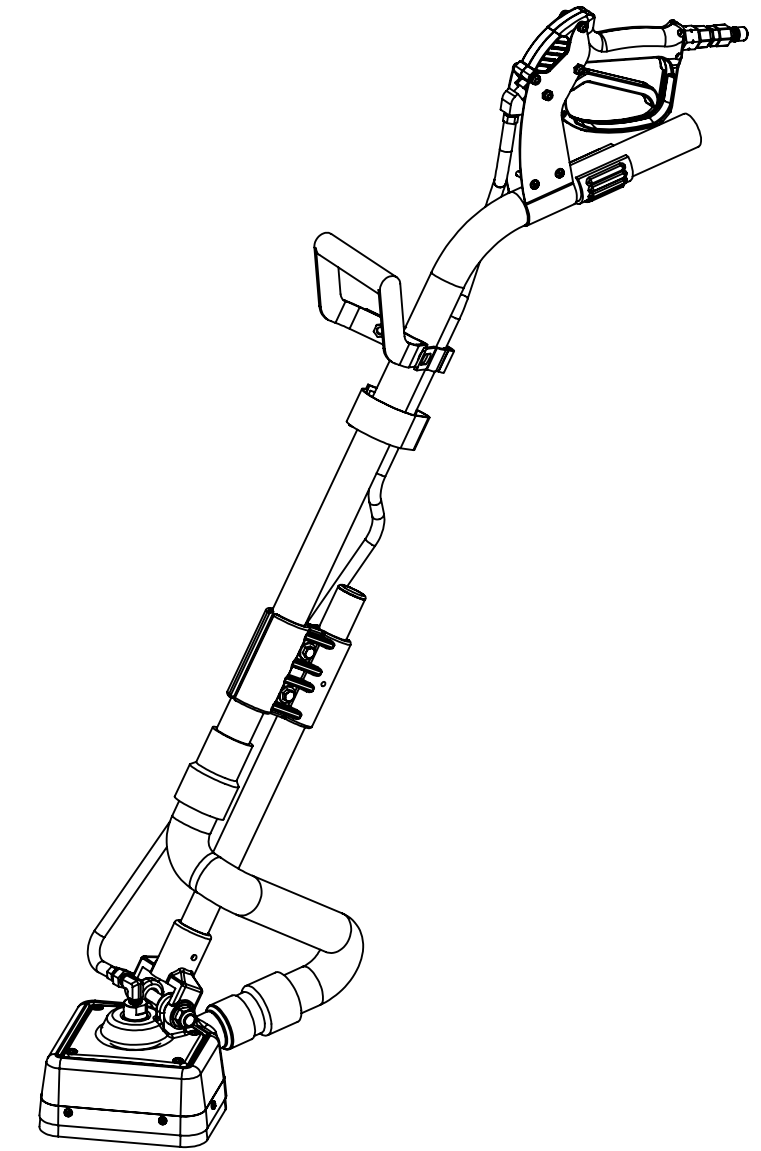
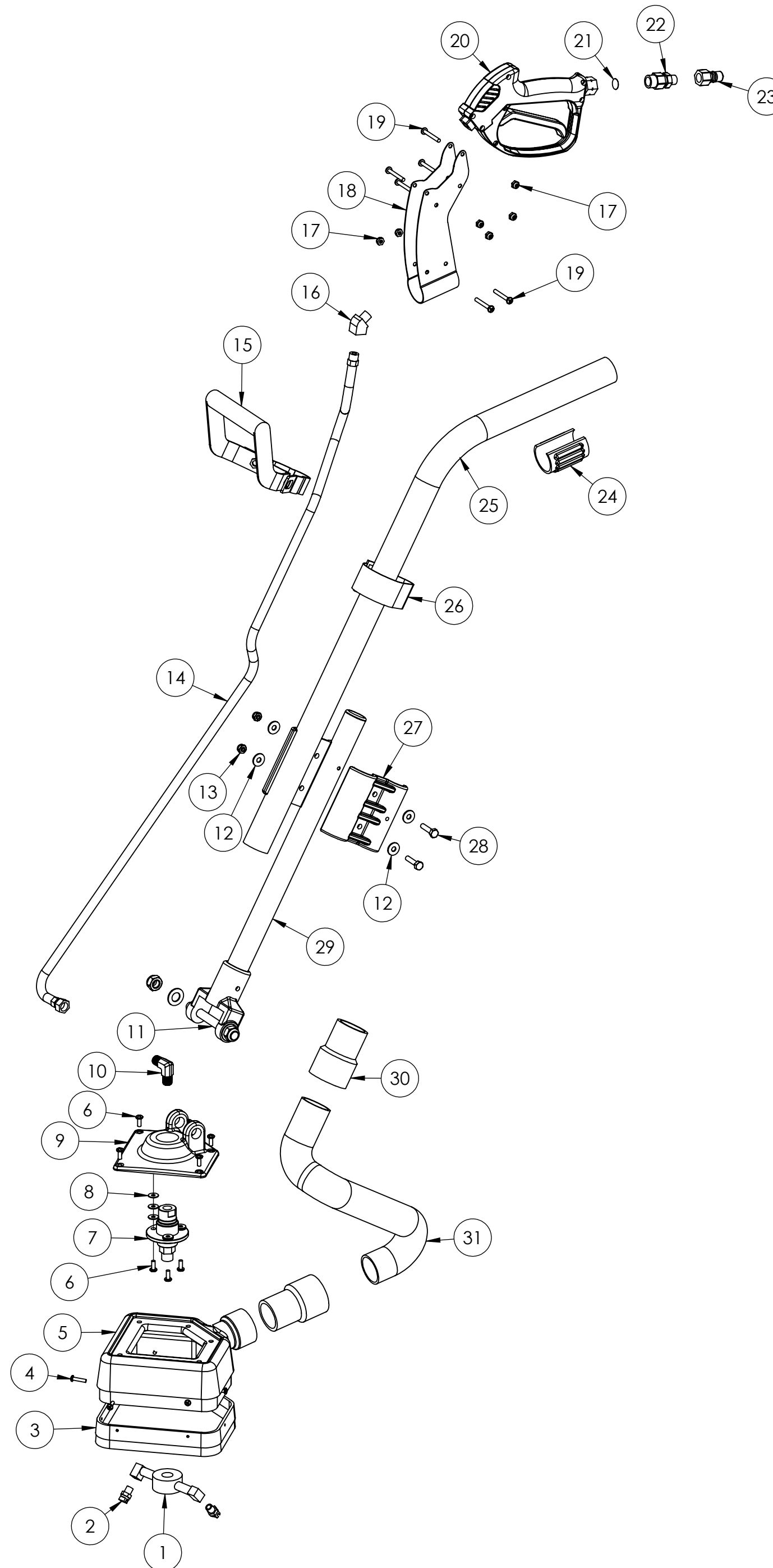


ITEM NO.	PART NO.	DESCRIPTION	QTY.	MSRP
1	H425	spray bar, 4"	1	\$117.99 ea
2	H505	jet, s/s, 1/8", 1501	2	\$9.99 ea
3	G089	brush, corner	1	\$35.99 ea
4	H882	screw, #8 x 3/4" phil pan head	8	\$0.99 ea
5	P701	manifold, corner	1	\$35.99 ea
6	H230	screw, #10-32 x 1/2" phil pan	8	\$0.99 ea
7	H926	swivel, flange	1	\$198.99 ea
8	H289	washer, #10 flat, s/s	9	\$0.99 ea
9	H488	casting, corner floor spinner	1	\$44.99 ea
10	B136	elbow, brass, 90 deg, 1/4" mpt x 1/4" mpt	1	\$4.99 ea
11	H475	rod, threaded, 4.65 x 1/2"	1	\$5.99 ea
12	H210	washer, 1/4" flat, s/s	4	\$0.99 ea
13	H216	nut, lock, 1/4-20, nylon insert, s/s	2	\$0.99 ea
14	AH206	sol hose, black 48" (OAL) fsw 1/4" x m1/4"	1	\$21.99 ea
15	H600	grip, 2", bentley	1	\$19.49 ea
16	B130	45 deg, street elbow, brass, 1/4" male NPTF	1	\$5.49 ea
17	H458	nut, lock, 10-32, thin pattern	6	\$0.99 ea
18	H614A	clamp, angled valve, 1.5" tube	1	\$16.99 ea
19	H457	screw, 10-32 x 1-1/2" p-pan	6	\$0.99 ea
20	H540	gun, high pressure	1	\$41.99 ea
21	H461	filter, mesh screen 3/8"	1	\$0.99 ea
22	H462	housing, filter, 2 pc	1	\$2.99 ea
23	B101	qd, brass, 1/4" m	1	\$8.49 ea
24	G082	sleeve, vac relief, 1.5", spin	1	\$3.25 ea
25	H616	tube, 1.5" spinner, upper handle	1	\$81.99 ea
26	G147	strap, velcro 1.5" x 12"	1	\$3.49 ea
27	H613A	clamp, spinner handle, 1.5" x 1.25"	2	\$11.99 ea
28	H203	bolt, 1/4-20 x 1-1/4" hex head, s/s	2	\$0.99 ea
29	H616B	tube, 1.25" spinner, lower handle, w/ yolk	1	\$42.99 ea
30	H300	cuff, black 1-1/2"	2	\$5.99 ea
31	PH627-25	vac hose, 1-1/2", black, wire reinforced	1	\$6.49/ft



	NAME	DATE	MYTEE PRODUCTS, INC. 858-679-1191	
DRAWN	M. LaBarbera	8/22/11	TITLE: Spinner, Corner	
CHECKED			SIZE C	DWG. NO. 8907
<small>PROPRIETARY AND CONFIDENTIAL</small> <small>THE INFORMATION CONTAINED IN THIS DRAWING IS THE SOLE PROPERTY OF MYTEE PRODUCTS, INC. ANY REPRODUCTION IN PART OR AS A WHOLE WITHOUT THE WRITTEN PERMISSION OF MYTEE PRODUCTS, INC. IS PROHIBITED.</small>			REV OD	SHEET 1 OF 1
			SCALE: 1:6	DO NOT SCALE DRAWING