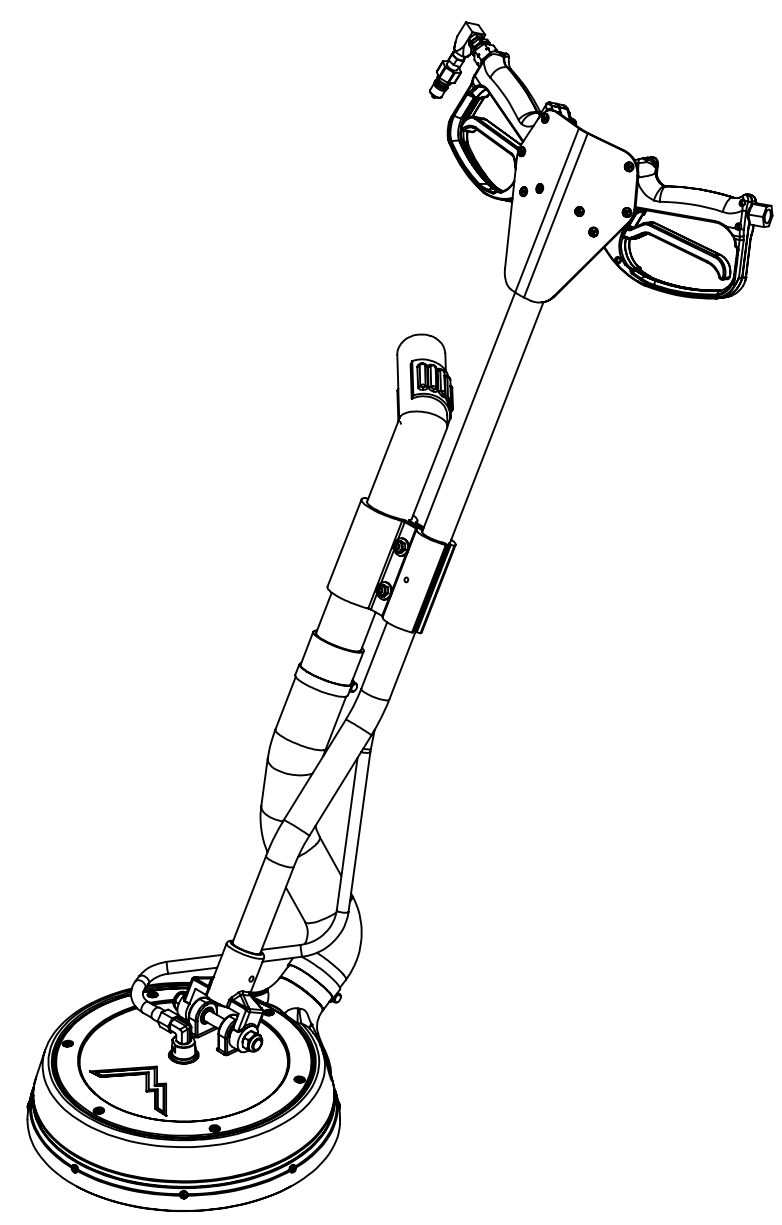
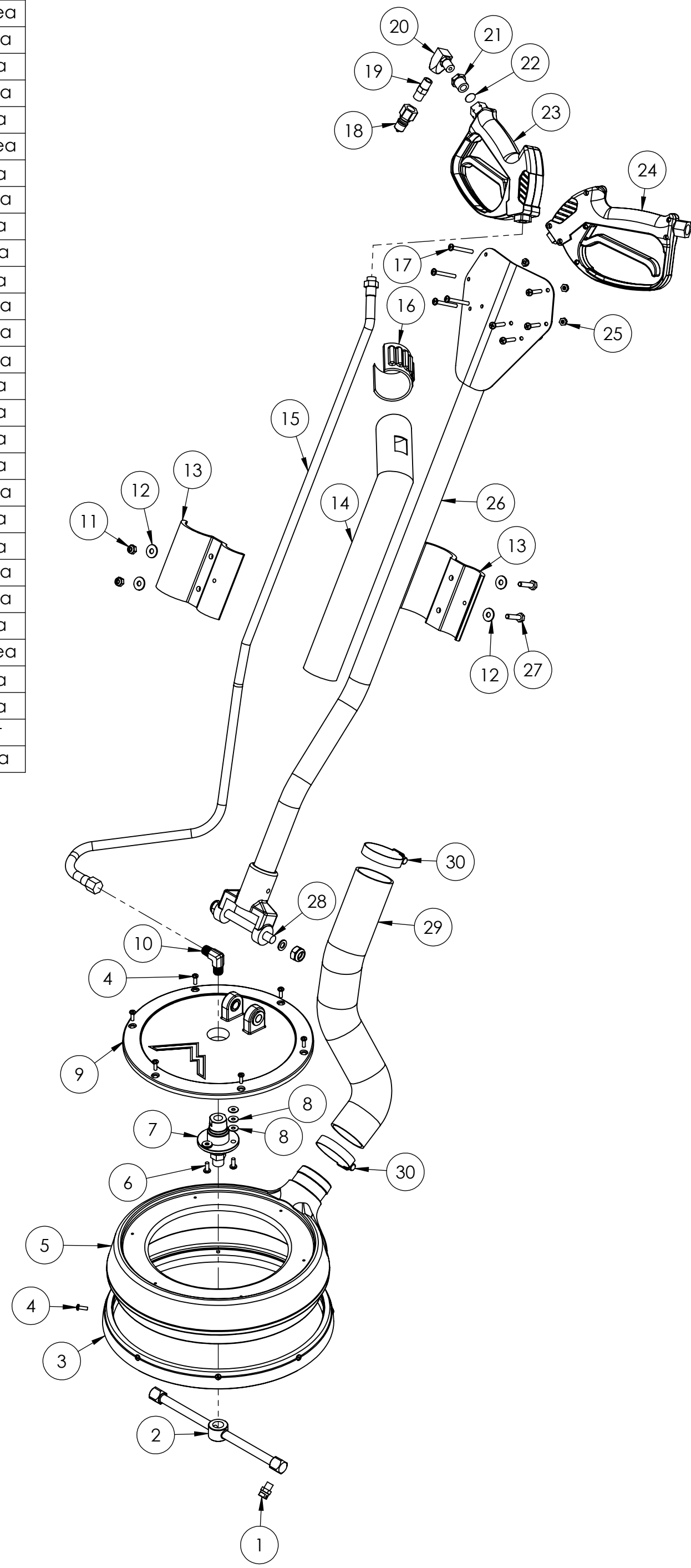


ITEM NO.	PART NO.	DESCRIPTION	QTY.	MSRP
1	H505	jet, s/s, 1/8", 1501	2	\$9.99 ea
2	H441	bar, t, straight, 42 deg, 10"	1	\$129.99 ea
3	G080	brush, spinner, 12"	1	\$34.99 ea
4	H882	screw, 8 x 3/4 phil pan head, type a, s/s	14	\$0.99 ea
5	P689A	manifold, spin 12", blue	1	\$51.99 ea
6	H230	screw, 10-32 x 1/2 phil pan	3	\$0.99 ea
7	H926	swivel, flange	1	\$198.99 ea
8	H289	washer, #10 flat, s/s	9	\$0.99 ea
9	H465A	casting, 12" low profile spinner	1	\$84.99 ea
10	B136	elbow, brass, 90 deg, 1/4" mpt x 1/4" mpt	1	\$4.99 ea
11	H216	nut, lock, 1/4-20 nylon insert	2	\$0.99 ea
12	H210	washer, 1/4" flat, s/s	4	\$0.99 ea
13	H613	clamp, spinner handle, 2" x 1.25"	2	\$17.99 ea
14	H093	tube, vac elbow, 2" dia, spinner	1	\$52.99 ea
15	AH206	sol hose, black 48" (OAL), fsw 1/4" x m 1/4"	1	\$21.99 ea
16	G082A	sleeve, vac relief, 2", spin	1	\$1.99 ea
17	H457	screw, 10-32 x 1-1/2", p-pan	8	\$0.99 ea
18	B101	qd, brass, 1/4" m	1	\$8.49 ea
19	B107	nipple, brass, 1/4"m, hex	1	\$3.19 ea
20	B100	swivel, 90 degrees x 1/4 fm x 1/4 ml, viton seals	1	\$26.99 ea
21	B105	bushing, brass, 3/8"mpt x 1/4"	1	\$3.19 ea
22	H461	filter, mesh screen 3/8"	1	\$0.99 ea
23	H540	gun, high pressure, (batt spray/ counter)	1	\$41.99 ea
24	H540A	angled gun, no trigger	1	\$20.99 ea
25	H458	nut, lock, 10-32, thin pattern	8	\$0.99 ea
26	H092	two handed spinner handle	1	\$139.99 ea
27	H203	bolt, 1/4-20 x 1-1/4" hex head, s/s	2	\$0.99 ea
28	H475	rod, threaded, 4.65 x 1/2"	1	\$5.99 ea
29	PH628-20	vac hose, 2", wire reinforced, gray	1	\$8.99/ft
30	H217	clamp, hose, 2-1/4 dia	2	\$1.49 ea



	NAME	DATE	MYTEE PRODUCTS, INC.		
DRAWN	M. LaBarbera	8/22/11	858-679-1191		
CHECKED			TITLE:		
PROPRIETARY AND CONFIDENTIAL THE INFORMATION CONTAINED IN THIS DRAWING IS THE SOLE PROPERTY OF MYTEE PRODUCTS, INC. ANY REPRODUCTION IN PART OR AS A WHOLE WITHOUT THE WRITTEN PERMISSION OF MYTEE PRODUCTS, INC. IS PROHIBITED.			Spinner, "T" Style, 2"		
			SIZE	DWG. NO.	REV
			C	8902	0D
			SCALE: 1:6	DO NOT SCALE DRAWING	SHEET 1 OF 1