

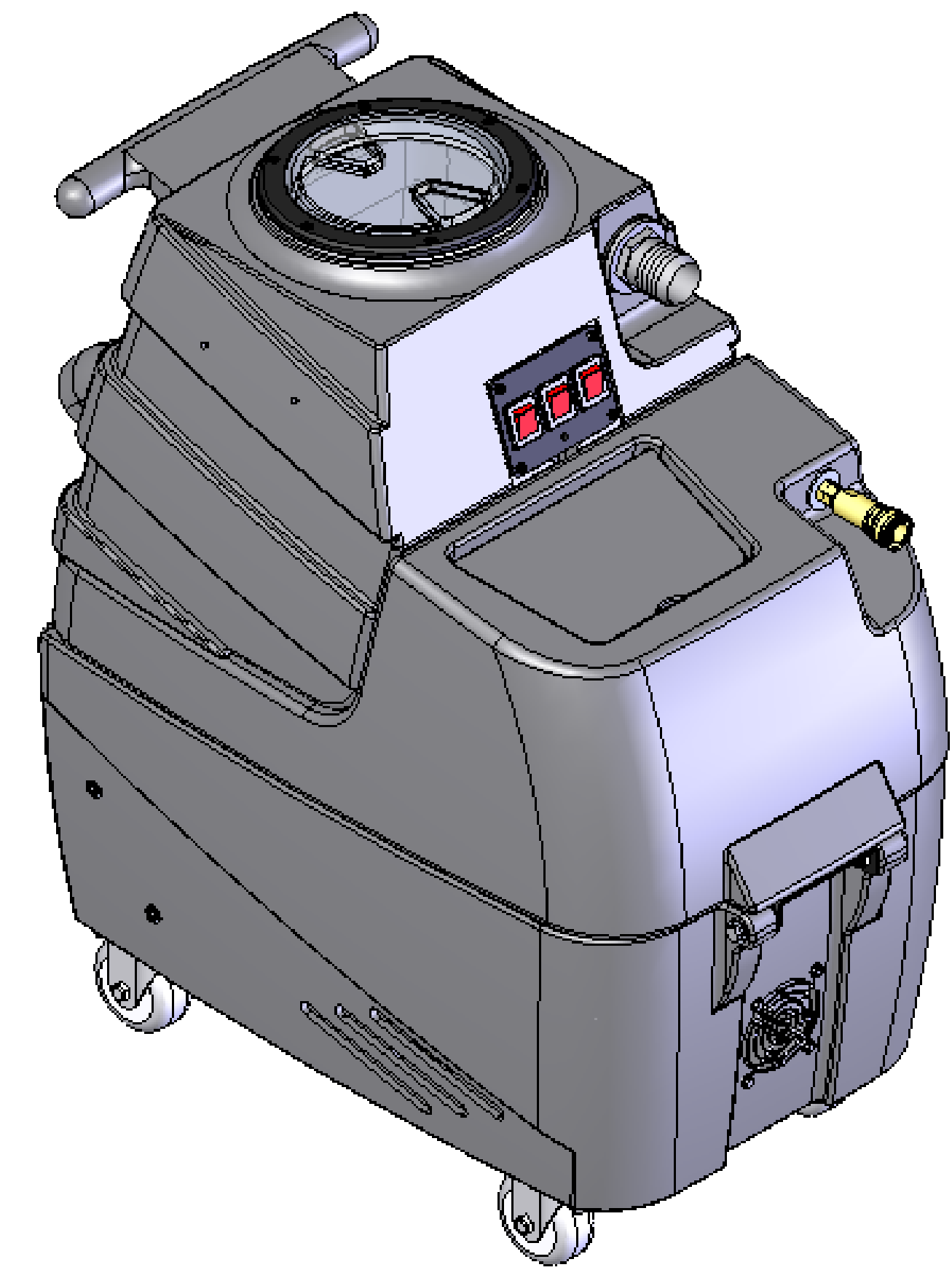
REVISIONS				
ZONE	REV.	DESCRIPTION	DATE	APPROVED
	A	REPLACED H212 WITH H876	4/27/04	

ITEM NO.	QTY.	PART NO.	DESCRIPTION	ITEM NO.	QTY.	PART NO.	DESCRIPTION
1	1	P791	BASE, SPYDER 6-GALLON	59	4	H877	#10 LOCK WASHER
2	2	H296	COOLING FAN WIRE GUARD	60	4	H230	SCREW, #10-32 x 1/2" LG. PHIL. PAN HD.
3	8	H206	SCREW, HEX HD., SELF-TAPPING, #10-32 x 1/2" LG.	61	6	H876	1/2" FLAT WASHER
4	1	H330 (HP60)	PLATE, SINGLE MANIFOLD	62	2	B111	ADAPTER, 1/4" M x 1/4" FM
5	22	H210	WASHER, FLAT, 1/4"	63	1	B107	NIPPLE, 1/4" HEX
6	18	H202	BOLT, HEX HD., 1/4-20 x 3/4" LG.	64	1	AH157	HOSE, 3/8" PULSE x 7" LG.
7	20	H216	LOCKNUT, 1/4-20 HEX, NYLON INSERT	65	2	H413	WASHER, NYLON
8	1	P735	SINGLE MANIFOLD	66	1	B106	NIPPLE, 1/4" CLOSE
9	1	G004	GASKET, VACUUM MOTOR	67	1	B102	QUICK DISCONNECT, 1/4" FEMALE
				68	1	B186	ELBOW, 90 DEG, 3/8" M x FM
				69	2	H299	WASHER, .688 x 1.50 x .075
10	1	C302	MOTOR, 3 STAGE 115V	70	1	B216	NIPPLE, 3/8" CLOSE
11	3	H768	BOLT, 1/4-20 x 3/4" LG. SERRATED FLANGE	71	1	B210	BUSHING, 1/2 m x 3/8 fm
12	3	H501	3-STAGE VACUUM SUPPORT	72	1	B119A	FILTER STRAINER, 1/2"
13	3	H201	BOLT, 1/4-20 x 1/2" LG. HEX HEAD	73	2	H203	HEX BOLT, 1/4-20 x 1-1/4" LG.
14	1	H217	HOSE CLAMP	74	2	H213	1/4" LOCK WASHER
15	1	PH627 (HP60)	HOSE, 1-1/2" VACUUM x 22" LG.	75	4	H211	WASHER, 1/4" ID x 1" OD
16	1	H300	HOSE CUFF, 1-1/2"	76	4	G052	BUNA WASHER, 1-1/8" OD x 3/16" ID
17	1	H298	90 DEG. PVC ELBOW, 1-1/2" S x 1-1/2" S	77	2	H215	1/4-20 HEX NUT
18	1	H343	SCREW, SELF-TAPPING, #10 x 5/8" LG.	78	1	P793	VACUUM TANK, SPYDER
				79	1	H225	DRAIN VALVE, 1-1/2"
19	1	C305	PUMP, 100 psi	80	1	H226	DRAIN SPOUT, 45 DEG.
20	8	H289	WASHER, FLAT, #10	81	2	H229	INLET FITTING, PVC, GRAY, 1-1/2"
21	2	H273	KEP-NUT, #10-32, ZINC	82	1	H244	ADAPTER, PVC, 1-1/2"
22	2	H222	#10-32 x 1-1/4" LG. PHIL. PAN HD. SCREW	83	1	PH633-07.5	PIPE, PVC, 1-1/2" x 7-1/2" LG.
23	1	B105	REDUCER, 3/8" M x 1/4" FM	84	1	P755	ELBOW FOR FLOAT ASSEMBLY
24	1	B136	90 DEG 1/4" M x M	85	1	H235	FLOAT CAGE
25	1	AH184	HOSE, 3/8" PULSE x 13" LG.	86	1	G060	VACUUM LID GASKET
26	1	B172	90 DEG 1/2" B x 3/8" MP	87	1	G056	LID, VACUUM TANK
27	1	PH615-28	HOSE, 1/2" KURITEK x 28" LG.	88	6	H304	SCREW, #8-32 x 5/8" LG. PHIL. OVAL
28	1	B160	FITTING, 1/2 BARB x 3/8 FM SWIVEL	89	1	H243	ELBOW, PVC, 90 DEG, 1-1/2" SLIP x 1-1/2" FT
29	2	H367 (HP60)	HEATER CASTING CYLINDER, 6 qt.	90	1	G001	GASKET, INLET, 1-1/2"
				91	1	H636	3-HOLE SWITCH PLATE
30	2	E571	HEATING ROD, 600W, 115V	92	4	H246	SCREW, #8-32 x 3/8" LG. SOCKET HD. CAP
31	2	H400	END CAP, HEATER	93	3	E592	SWITCH, RED LIGHTED
32	2	H400A	END CAP, HEATER (NON SLOTTED)				
33	2	G017	INSULATION, HEATER WRAP				
34	4	G017A	INSULATION, HEATER END CAP				
35	2	G019	PLASTIC STRIP, HEATER (2-5/8" x 23" LG.)				
36	1	B207	90 DEG 1/4" FM x FM				
37	1	B108	CHECK VALVE, 1/4"				
38	5	B103	90 DEG 1/4" M x FM				
39	1	B113	1/4" TEE (ALL FEMALE)				
40	1	AH158	HOSE, 3/8" PULSE x 6-1/2" LG.				
41	1	B124	VALVE, 175 psi RELIEF				
42	1	AH150	HOSE (1/4" KURITEK) W/ FITTINGS				
43	2	E573	THERMOSTAT, 210 DEG AUTO				
44	2	E574	THERMOSTAT, 375 DEG MANUAL				
45	10	H274	SCREW, #6 x 3/16" LG.				
46	2	H272	CLAMP, HEATER (5-1/2")				
47	1	AH106	HOSE, 3/8" SURGE x 20" LG.				
48	4	H667	CASTER, 3" DIA.				
49	1	H220	CORD STRAIN RELIEF FITTING				
50	1	H221	1/2" STEEL LOCK NUT				
51	1	E531	POWER CORD, 12ga, 25'				
52	1	P792 (601)	SOLUTION TANK, SPYDER				
53	1	P792-1	LID, SPYDER SOLUTION TANK				
54	1	H379	BRACKET, FRONT HINGE				
55	6	H770	BOLT, 1/4-20 x 1/2" LG. SERRATED FLANGE				
56	2	H204	BOLT, 1/4-20 x 1-3/4" LG. HEX HEAD				
57	1	H912	BRACKET, REAR LATCH (SPYDER & FIREBIRD)				
58	2	H390	"L" BRACKET				

ADDITIONAL COMPONENTS NOT SHOWN:

WIRING HARNESS COMPONENTS

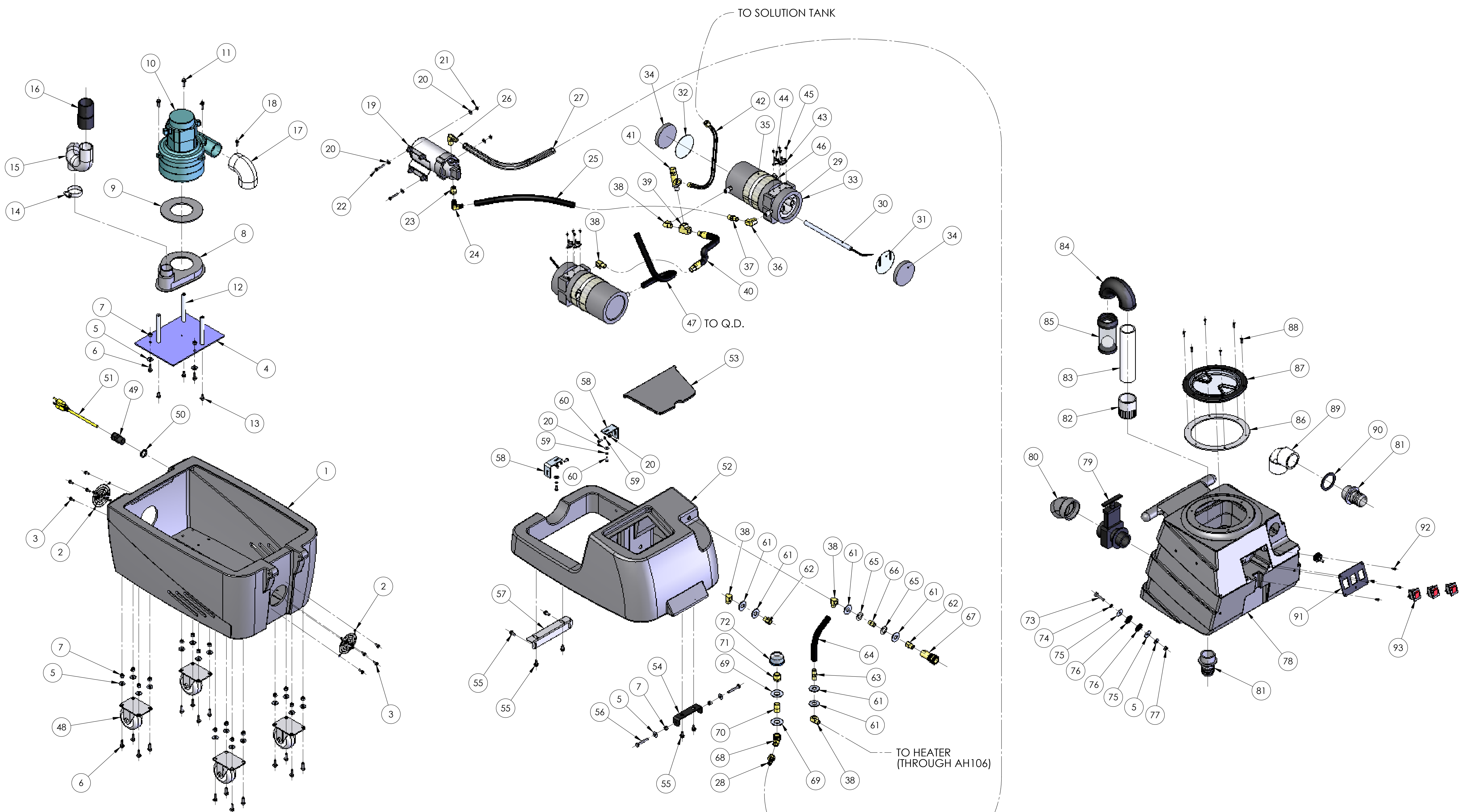
- E513 - WIRE TIES, SMALL
- E514 - WIRE TIES, LARGE
- H347 - CLAMP, HOSE
- L871 - BOX, SPYDER
- L871A - BOX, LOWER SUPPORT
- L871B - BOX, SPYDER TRAY



PROPRIETARY AND CONFIDENTIAL
THE INFORMATION CONTAINED IN THIS DRAWING IS THE SOLE PROPERTY OF
-INSERT COMPANY NAME HERE-. ANY
REPRODUCTION IN PART OR AS A WHOLE
WITHOUT THE WRITTEN PERMISSION OF
-INSERT COMPANY NAME HERE- IS
PROHIBITED.

UNLESS OTHERWISE SPECIFIED:		NAME	DATE	MYTEE PRODUCTS, INC.
DIMENSIONS ARE IN INCHES TOLERANCES: FRACTIONAL ± .005 ANGULAR MATCH ± .005 TWO PLACE DECIMAL ± .005 THREE PLACE DECIMAL ± .005		DRAWN	J. BEVIER 3/25/04	
INTERPRET GEOMETRIC TOLERANCING PER: MATERIAL SEE B.O.M.		ENG APPR.		TITLE: SPYDER, 601 ASSEMBLY
NEXT ASSY		Q.A.		SIZE D
USED ON		COMMENTS:		DWG. NO. 00007
APPLICATION				REV A
				SCALE: 1:4 WEIGHT: SHEET 1 OF 2

REVISIONS				
ZONE	REV.	DESCRIPTION	DATE	APPROVED
	A	REPLACED H212 WITH H876	4/27/04	



PROPRIETARY AND CONFIDENTIAL
 THE INFORMATION CONTAINED IN THIS DRAWING IS THE SOLE PROPERTY OF MYTEE PRODUCTS, INC. ANY REPRODUCTION IN PART OR AS A WHOLE WITHOUT THE WRITTEN PERMISSION OF MYTEE PRODUCTS, INC. IS PROHIBITED.

UNLESS OTHERWISE SPECIFIED:		NAME	DATE	MYTEE PRODUCTS, INC. TITLE: SPYDER, 601 ASSEMBLY SIZE DWG. NO. D 00007 REV A SCALE: 1:6 WEIGHT: SHEET 2 OF 2
DIMENSIONS ARE IN INCHES		DRAWN	J. BEVIER 3/25/04	
TOLERANCES:		CHECKED		
FRACTIONAL ± .005 ANGULAR MATCH ± .010 TWO PLACE DECIMAL ± .005 THREE PLACE DECIMAL ± .001		ENG APPR.		
INTERPRET GEOMETRIC TOLERANCING PER:		Q.A.		
MATERIAL:		COMMENTS:		
SEE B.O.M.				
NEXT ASSY	USED ON	FINISH		
APPLICATION				