

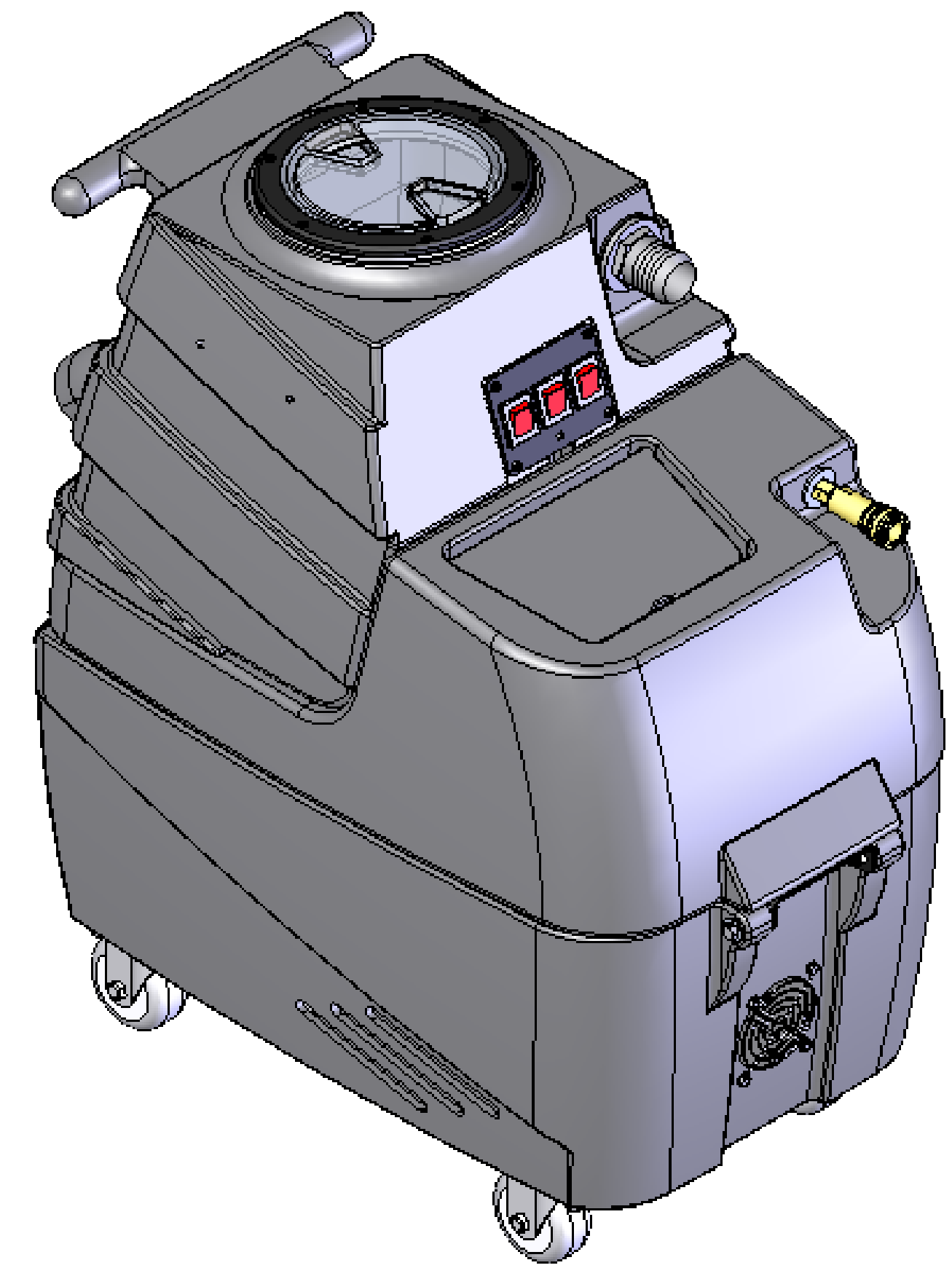
REVISIONS				
ZONE	REV.	DESCRIPTION	DATE	APPROVED
A		REVISED PARTS LIST	1/28/04	
B		REPLACED H212 WITH H876	4/23/04	

ITEM NO.	QTY.	PART NO.	DESCRIPTION	ITEM NO.	QTY.	PART NO.	DESCRIPTION
1	1	P791	BASE, SPYDER 6-GALLON	51	1	B186	ELBOW, 90 DEG, 3/8" M x FM
2	2	H296	COOLING FAN WIRE GUARD	52	2	H299	WASHER, .688 x 1.50 x .075
3	8	H206	SCREW, HEX HD., SELF-TAPPING, #10-32 x 1/2" LG.	53	1	B216	NIPPLE, 3/8" CLOSE
4	1	H253 (600)	PLATE, DUAL MANIFOLD, 9" x 13"	54	1	B210	BUSHING, 1/2 m x 3/8 fm
5	22	H210	WASHER, FLAT, 1/4"	55	1	B119A	FILTER STRAINER, 1/2"
6	18	H202	BOLT, HEX HD., 1/4-20 x 3/4" LG.	56	2	H203	HEX BOLT, 1/4-20 x 1-1/4" LG.
7	20	H216	LOCKNUT, 1/4-20 HEX, NYLON INSERT	57	2	H213	1/4" LOCK WASHER
8	2	P735	SINGLE MANIFOLD	58	4	H211	WASHER, 1/4" ID x 1" OD
9	2	G004	GASKET, VACUUM MOTOR	59	4	G052	BUNA WASHER, 1-1/8" OD x 3/16" ID
				60	2	H215	1/4-20 HEX NUT
10	2	C301	MOTOR, 2 STAGE 115V	61	1	P793	VACUUM TANK, SPYDER
11	6	H768	BOLT, 1/4-20 x 3/4" LG. SERRATED FLANGE	62	1	H225	DRAIN VALVE, 1-1/2"
12	6	H500	2-STAGE VACUUM SUPPORT	63	1	H226	DRAIN SPOUT, 45 DEG.
13	6	H201	BOLT, 1/4-20 x 1/2" LG. HEX HEAD	64	2	H229	INLET FITTING, PVC, GRAY, 1-1/2"
14	1	H298	90 DEG. PVC ELBOW, 1-1/2" S x 1-1/2" S	65	1	H244	ADAPTER, PVC, 1-1/2"
15	1	H343	SCREW, SELF-TAPPING, #10 x 5/8" LG.	66	1	PH633-07.5	PIPE, PVC, 1-1/2" x 7-1/2" LG.
16	3	H217	HOSE CLAMP	67	1	P755	ELBOW FOR FLOAT ASSEMBLY
17	1	PH628-08	HOSE, 2" VACUUM x 8" LG.	68	1	H235	FLOAT CAGE
18	1	PH627 (600)	HOSE, 1-1/2" VACUUM x 22" LG.	69	1	G060	VACUUM LID GASKET
19	1	H300	HOSE CUFF, 1-1/2"	70	1	G056	LID, VACUUM TANK
				71	6	H304	SCREW, #8-32 x 5/8" LG. PHIL. OVAL
20	1	C305	PUMP, 100 psi	72	1	H243	ELBOW, PVC, 90 DEG, 1-1/2" SLIP x 1-1/2" FT
21	8	H289	WASHER, FLAT, #10	73	1	G001	GASKET, INLET, 1-1/2"
22	2	H273	KEP-NUT, #10-32, ZINC	74	1	H636	3-HOLE SWITCH PLATE
23	2	H222	#10-32 x 1-1/4" LG. PHIL. PAN HD. SCREW	75	4	H246	SCREW, #8-32 x 3/8" LG. SOCKET HD. CAP
24	1	B105	REDUCER, 3/8" M x 1/4" FM	76	3	E592	SWITCH, RED LIGHTED
25	1	B136	90 DEG 1/4" M x M				
26	1	AH184	HOSE, 3/8" PULSE x 13" LG.				
27	1	B172	90 DEG 1/2" B x 3/8" MP				
28	1	PH615-28	HOSE, 1/2" KURITEK x 28" LG.				
29	1	B160	FITTING, 1/2 BARB x 3/8 FM SWIVEL				
30	4	H667	CASTER, 3" DIA.				
31	1	H220	CORD STRAIN RELIEF FITTING				
32	1	H221	1/2" STEEL LOCK NUT				
33	1	E532	POWER CORD, GREY, 14ga, 25'				
34	1	P792 (600)	SOLUTION TANK, SPYDER				
35	1	P792-1	LID, SPYDER SOLUTION TANK				
36	1	H379	BRACKET, FRONT HINGE				
37	6	H770	BOLT, 1/4-20 x 1/2" LG. SERRATED FLANGE				
38	2	H204	BOLT, 1/4-20 x 1-3/4" LG. HEX HEAD				
39	1	H912	BRACKET, REAR LATCH (SPYDER & FIREBIRD)				
40	2	H390	"L" BRACKET				
41	4	H877	#10 LOCK WASHER				
42	4	H230	SCREW, #10-32 x 1/2" LG. PHIL. PAN HD.				
43	2	B103	90 DEG 1/4" M x FM				
44	4	H876	1/2" FLAT WASHER				
45	1	B107	NIPPLE, 1/4" HEX				
46	1	AH157	HOSE, 3/8" PULSE x 7" LG.				
47	2	H413	WASHER, NYLON				
48	1	B106	NIPPLE, 1/4" CLOSE				
49	1	B111	ADAPTER, 1/4" M x 1/4" FM				
50	1	B102	QUICK DISCONNECT, 1/4" FEMALE				

ADDITIONAL COMPONENTS NOT SHOWN:

WIRING HARNESS COMPONENTS

- E513 - WIRE TIES, SMALL
- H347 - CLAMP, HOSE
- L871 - BOX, SPYDER
- L871A - BOX, LOWER SUPPORT
- L871B - BOX, SPYDER TRAY

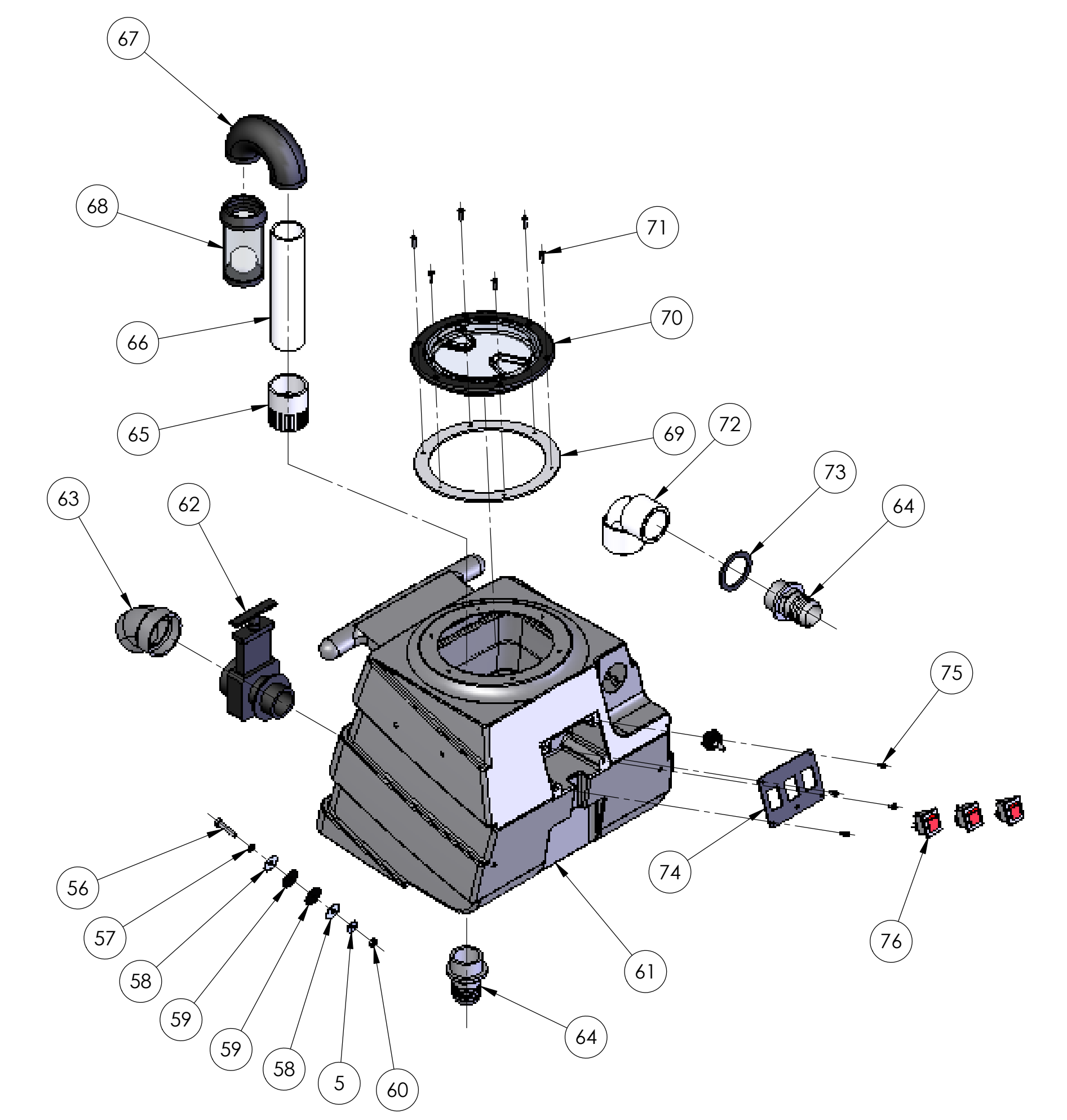
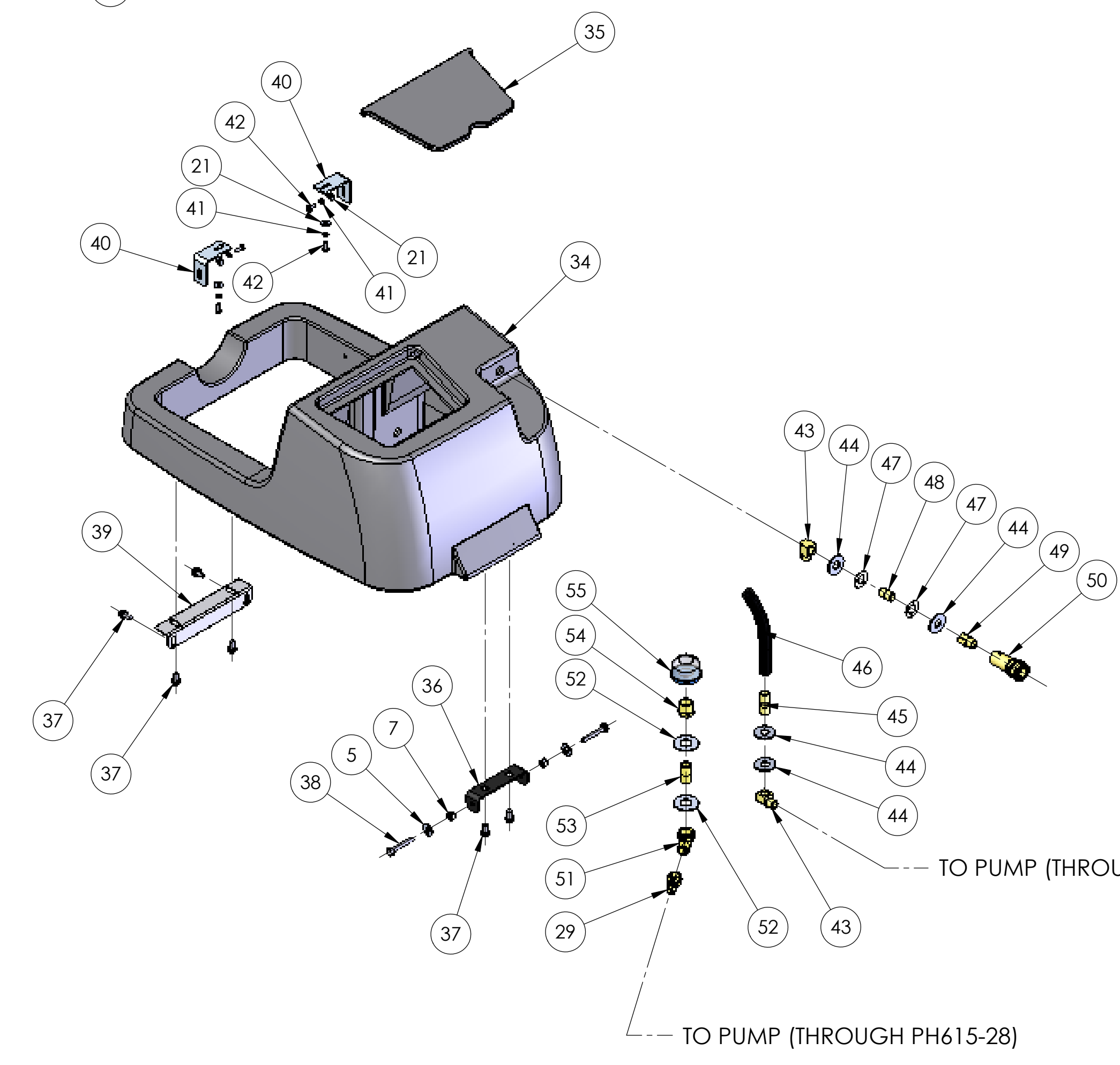
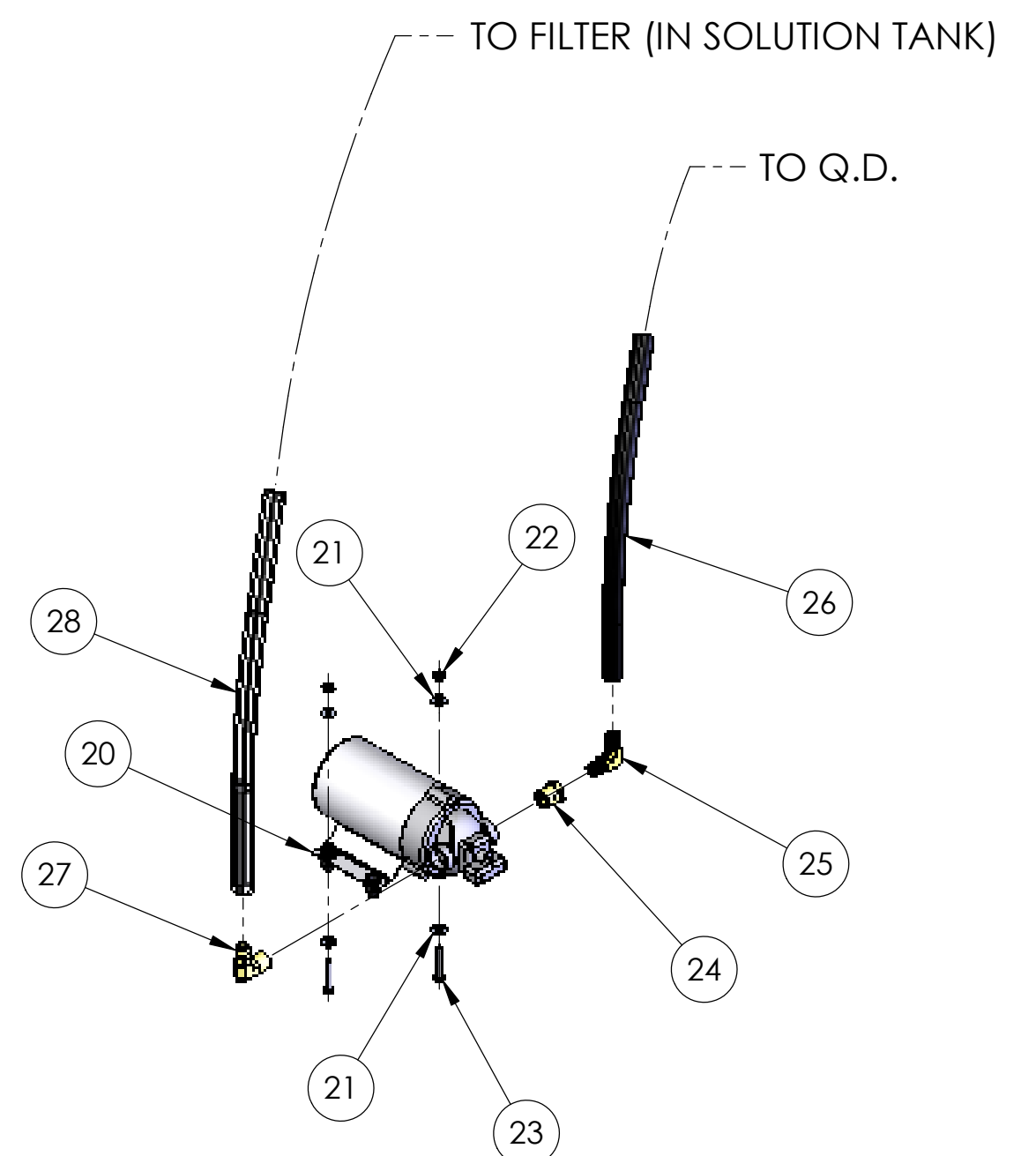
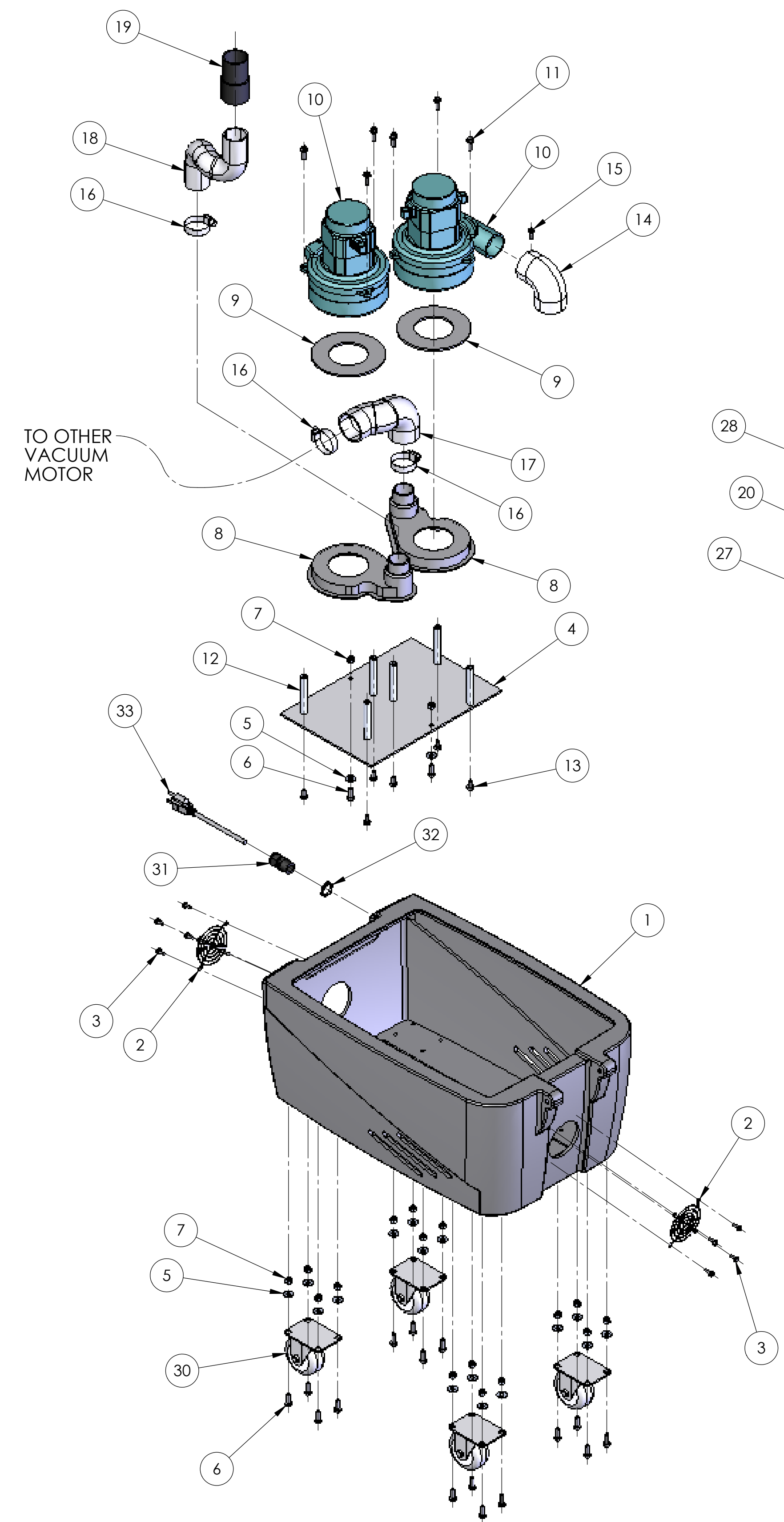
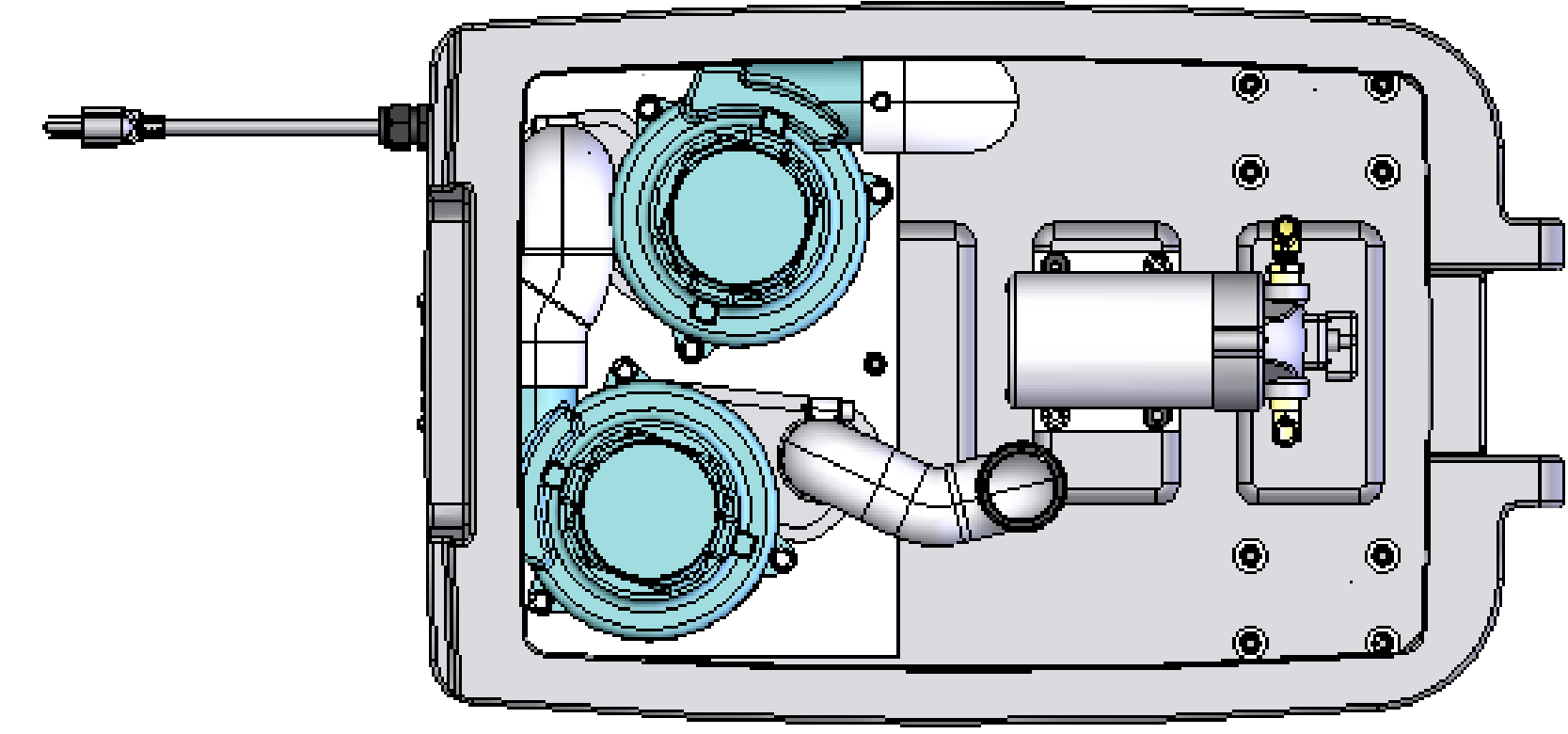


PROPRIETARY AND CONFIDENTIAL
 THE INFORMATION CONTAINED IN THIS DRAWING IS THE SOLE PROPERTY OF MYTEE PRODUCTS, INC. ANY REPRODUCTION IN PART OR AS A WHOLE WITHOUT THE WRITTEN PERMISSION OF MYTEE PRODUCTS, INC. IS PROHIBITED.

UNLESS OTHERWISE SPECIFIED:		NAME	DATE	MYTEE PRODUCTS, INC. TITLE: SPYDER, 600 ASSEMBLY SIZE DWG. NO. REV D 00006 B SCALE: 1:4 WEIGHT: SHEET 1 OF 2
DIMENSIONS ARE IN INCHES		DRAWN	J. BEVIER/12/15/03	
TOLERANCES:		CHECKED		
FRACTIONAL ± ANGULAR MATCH ± BEND ± TWO PLACE DECIMAL ± THREE PLACE DECIMAL ±		ENG APPR.		
INTERPRET GEOMETRIC TOLERANCING PER:		MFG APPR.		COMMENTS:
MATERIAL		Q.A.		
SEE B.O.M.				
NEXT ASSY	USED ON	FINISH		
APPLICATION				

REVISIONS				
ZONE	REV.	DESCRIPTION	DATE	APPROVED
	A	REVISED PARTS LIST	1/28/04	
	B	REPLACED H212 WITH H876	4/23/04	

**TOP VIEW
1/4 SCALE**



PROPRIETARY AND CONFIDENTIAL
THE INFORMATION CONTAINED IN THIS DRAWING IS THE SOLE PROPERTY OF MYTEE PRODUCTS, INC. ANY REPRODUCTION IN PART OR AS A WHOLE WITHOUT THE WRITTEN PERMISSION OF MYTEE PRODUCTS, INC. IS PROHIBITED.

UNLESS OTHERWISE SPECIFIED:		NAME	DATE	MYTEE PRODUCTS, INC.
DIMENSIONS ARE IN INCHES		J. BEVIER	12/15/03	
TOLERANCES:		DRAWN		TITLE:
FRACTIONAL ±		CHECKED		SPYDER, 600 ASSEMBLY
ANGULAR: MACH ±		ENG APPR:		SIZE DWG. NO.
TWO PLACE DECIMAL ±		MFG APPR:		D 00006
THREE PLACE DECIMAL ±		Q.A.		REV
INTERPRET GEOMETRIC TOLERANCING PER: SEE B.O.M.		COMMENTS:		B
NEXT ASSY	USED ON	FINISH		SCALE: 1:6
APPLICATION				WEIGHT:
				SHEET 2 OF 2