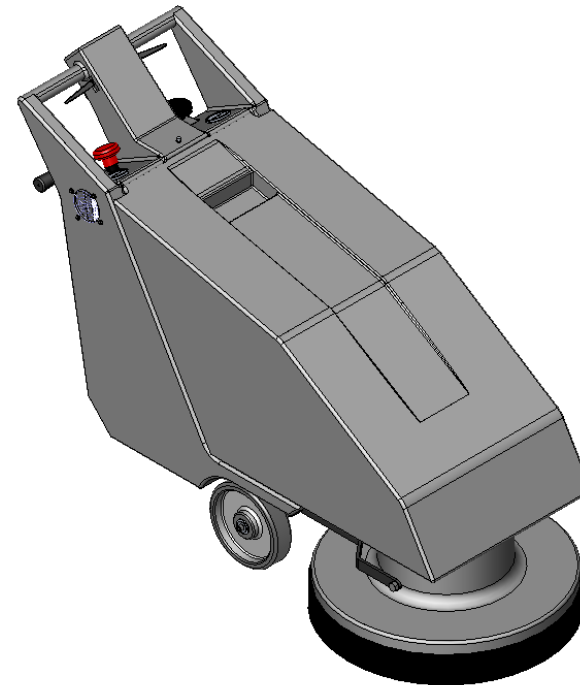


REVISIONS				
ZONE	REV.	DESCRIPTION	DATE	APPROVED
	A	ADDED FASTENERS	3/8/04	

ITEM NO.	QTY.	PART NO.	DESCRIPTION
1	1	P716	CHASSIS
2	3	H296	COOLING FAN WIRE GUARD
3	12	H206	SCREW, HEX HD., SELF-TAPPING, #10-32 x 1/2" LG.
4	1	H813	7/16" ROUND STUD
5	1	WB001	MOTOR CONTROLLER WITH BATTERY CHARGER
6	4	H383	SCREW, PHIL. PAN HD., 1/4-20 x 2" LG.
7	6	H216	LOCKNUT, 1/4-20
8	10	H705	SCREW, TRUSS HEAD, 1/4-20 x 3/4" LG.
9	2	H828	SCREW, FLAT HD., #10-32 x 1/2" LG.
10	3	E773	BATTERY
11	1	E774	METER, 0-100 mvdc
12	1	E775	METER, 22-45 vdc
13	1	E778	INLET
14	1	AWBSPACER	SPACER, CASTER
15	4	H829	SCREW, FLAT HD., 1/4-20 x 3/8" LG.
16	1	H786	CASTER, 4"
17	6	H724	SCREW, SOCKET HD. CAP, 3/8-16 x 1" LG.
18	1	H792	KNOB, HEIGHT ADJUSTMENT
19	1	P715	CHASSIS COVER
20	1	H431	20" FLOOR PAD
21	1	H836	CENTER LOCK
22	1	H825	2-3/4" DRIVE WASHER
23	1	H810	9-3/4" DIA. ADAPTOR FLANGE
24	1	H809	9" DIA. FLANGE
25	1	P717	HEAD
26	1	H801	SPLASH GUARD
27	1	H335	ADAPTER, PVC, 1-1/2" S x 1-1/2" MPT
28	1	G027	DRY VAC FILTER BAG
29	1	C372	MOTOR
30	1	H808	MOTOR FILTER
31	4	H890	#10-24 X 1/2" LG. HEX WASHER HD. SCREW
32	1	H783	LIFT WELDMENT
33	9	H789	BOLT, HEX HD., 1/2-13 x 3/4" LG.
34	1	H812	AXLE
35	2	H807	AXLE MOUNT BRACKET
36	2	H787	WHEEL, 8"
37	2	H254	WASHER, AXLE, 5/8" ID
38	2	H384	WASHER, FLAT, 3/8"
39	1	H784	LIFT LEVER
40	1	H805	LIFT HANDLE BRACKET
41	1	H790	BOLT, HEX HD., 1/2-13 x 1-1/2" LG.
42	1	H811	LIFT HANDLE
43	1	13804-A	HANDLE GRIP
44	1	H803	ROD LEVER
45	1	H814	SPRING
46	1	H849	PRESSURE SLEEVE
47	1	H804	LATCH PLATE
48	1	H806	COVER PANEL
49	6	H230	SCREW, #10-32 x 1/2" LG. PHIL. PAN HD.
50	1	H796	SWITCH
51	1	H797	SWITCH BRACKET
52	2	H826	SWITCH SPACER
53	2	H795	SWITCH LEVER
54	1	H798	SWITCH COVER PLATE

ADDITIONAL COMPONENTS:

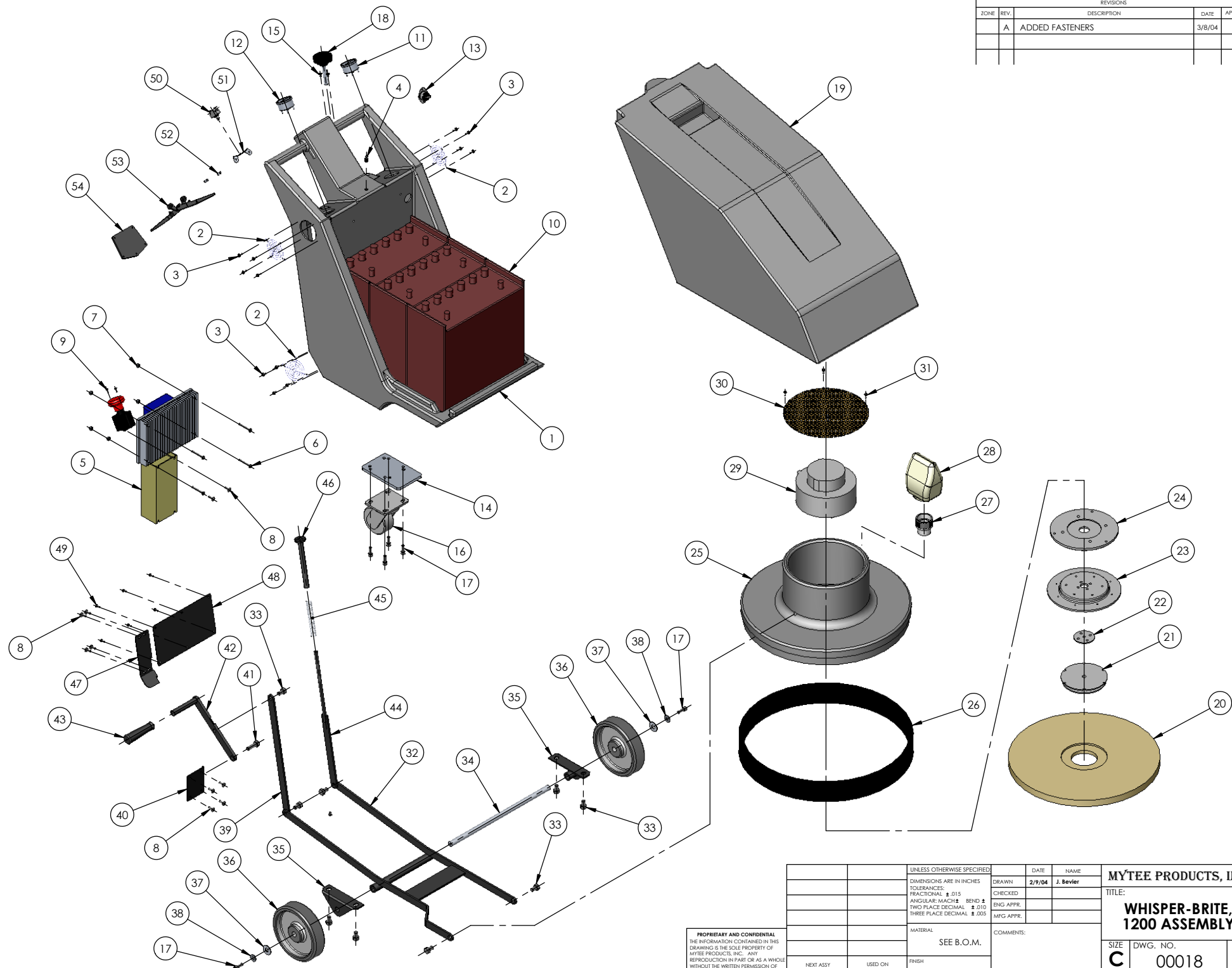
- CONNECTOR: E777
 CABLE: E780
 CABLE: E781
 CABLE: E782
 25' CHARGER POWER CORD: E783
 CABLE KIT: E784
 CIRCUIT BREAKER, 100 AMP: E901
 CURRENT MONITOR ASSEMBLY: H438
 18" PAD DRIVER: H800
 BOX: L897
 BOX, TRAY: L897A
 PALLET: L897B



PROPRIETARY AND CONFIDENTIAL
 THE INFORMATION CONTAINED IN THIS DRAWING IS THE SOLE PROPERTY OF MYTEE PRODUCTS, INC. ANY REPRODUCTION IN PART OR AS A WHOLE WITHOUT THE WRITTEN PERMISSION OF MYTEE PRODUCTS, INC. IS PROHIBITED.

UNLESS OTHERWISE SPECIFIED:		DATE	NAME	MYTEE PRODUCTS, INC. TITLE: WHISPER-BRITE, 1200 ASSEMBLY
DIMENSIONS ARE IN INCHES		2/9/04	J. Bevier	
TOLERANCES:		CHECKED		
FRACTIONAL ±		ENG APPR.		
ANGULAR: MACH ± BEND ±		MFG APPR.		SIZE C DWG. NO. 00018 REV A
TWO PLACE DECIMAL ± .010		COMMENTS:		
THREE PLACE DECIMAL ± .005		MATERIAL		SCALE: 1:8 DO NOT SCALE DRAWING SHEET 1 OF 2
		SEE B.O.M.		
NEXT ASSY	USED ON	FINISH	USED ON:	

REV. NO.		REVISIONS	DATE	APPROVED
ZONE	REV.	DESCRIPTION		
	A	ADDED FASTENERS	3/8/04	



PROPRIETARY AND CONFIDENTIAL
 THE INFORMATION CONTAINED IN THIS DRAWING IS THE SOLE PROPERTY OF MYTEE PRODUCTS, INC. ANY REPRODUCTION IN PART OR AS A WHOLE WITHOUT THE WRITTEN PERMISSION OF MYTEE PRODUCTS, INC. IS PROHIBITED.

UNLESS OTHERWISE SPECIFIED:		DATE	NAME
DIMENSIONS ARE IN INCHES		2/9/04	J. Bevier
TOLERANCES:		CHECKED	
FRACTIONAL ± .015		ENG APPR.	
ANGULAR: MACH ± BEND ±		MFG APPR.	
TWO PLACE DECIMAL ± .010		COMMENTS:	
THREE PLACE DECIMAL ± .005			
MATERIAL	SEE B.O.M.		
FINISH			
NEXT ASSY	USED ON	USED ON:	
APPLICATION			

MYTEE PRODUCTS, INC.		
TITLE:		
WHISPER-BRITE, 1200 ASSEMBLY		
SIZE	DWG. NO.	REV
C	00018	A
SCALE: 1:8		DO NOT SCALE DRAWING
		SHEET 2 OF 2