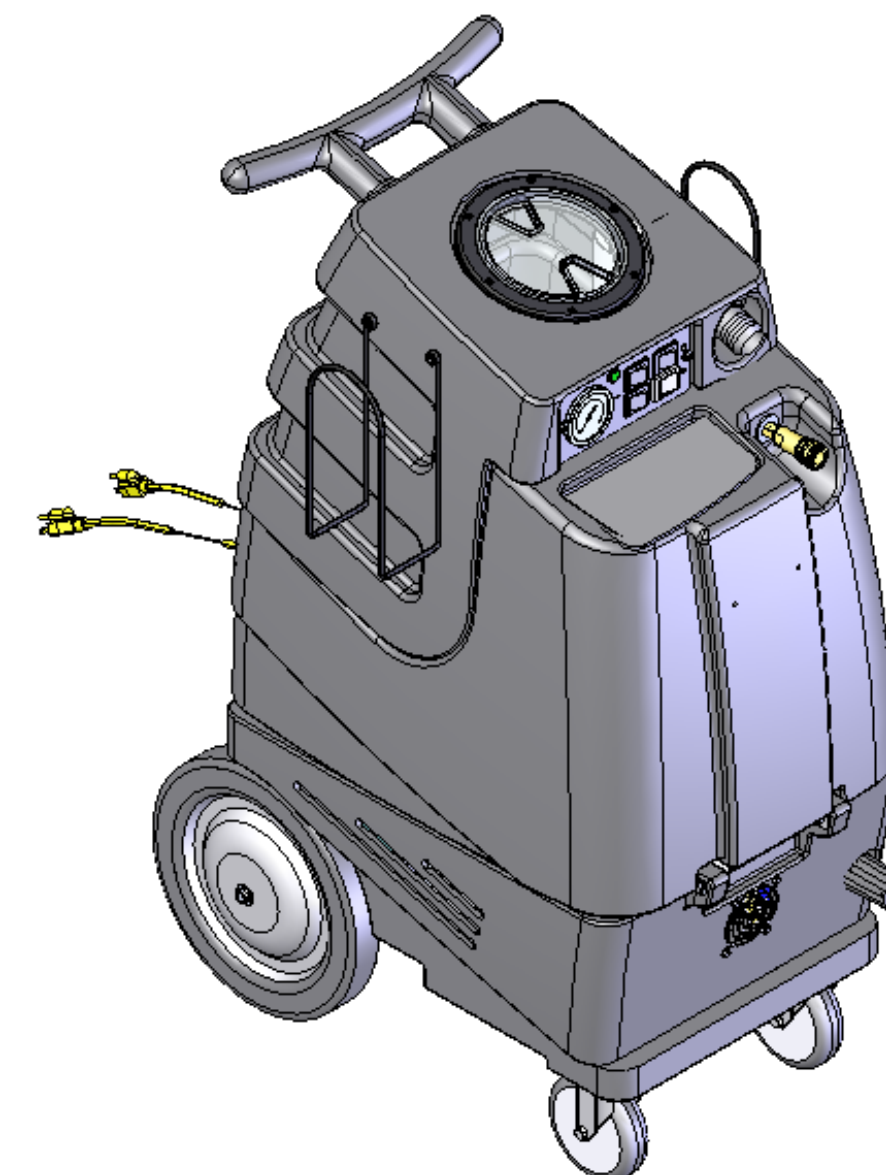


ITEM NO.	QTY.	PART NO.	DESCRIPTION	ITEM NO.	QTY.	PART NO.	DESCRIPTION
1	1	P731 (1005HV)	BASE, SPEEDSTER	59	1	B107	NIPPLE, 1/4" HEX
2	2	H296	COOLING FAN WIRE GUARD	60	1	AH105	HOSE, 3/8" SURGE x 15-3/4" LG.
3	8	H206	SCREW, HEX HD., SELF-TAPPING, #10-32 x 1/2" LG.	61	2	H413	WASHER, NYLON
4	1	H253	PLATE, DUAL MANIFOLD, 9" x 13"	62	2	B106	NIPPLE, 1/4" CLOSE
5	16	H210	WASHER, FLAT, 1/4"	63	1	B102	QUICK DISCONNECT, 1/4" FEMALE
6	10	H342	BOLT, HEX HD., 1/4-20 x 1" LG.	64	1	B186	ELBOW, 90 DEG, 3/8" M x FM
7	12	H216	LOCKNUT, 1/4-20 HEX, NYLON INSERT	65	2	H299	WASHER, .688 x 1.50 x .075
8	2	P735	SINGLE MANIFOLD	66	1	B216	NIPPLE, 3/8" CLOSE
9	2	G004	GASKET, VACUUM MOTOR	67	1	B210	BUSHING, 1/2 m x 3/8 fm
				68	1	B119A	FILTER STRAINER, 1/2"
<b>10</b>	<b>2</b>	<b>C302</b>	<b>MOTOR, 3 STAGE 115V</b>	69	2	H203	HEX BOLT, 1/4-20 x 1-1/4" LG.
11	4	H217	HOSE CLAMP	70	2	H213	1/4" LOCK WASHER
12	1	G059	EXHAUST BOOT, PLASTISOL	71	4	H211	WASHER, 1/4" ID x 1" OD
13	6	H768	BOLT, 1/4-20 x 3/4" LG. SERRATED FLANGE	72	4	G052	BUNA WASHER, 1-1/8" OD x 3/16" ID
14	6	H501	3-STAGE VACUUM SUPPORT	73	2	H215	1/4-20 HEX NUT
15	6	H201	BOLT, 1/4-20 x 1/2" LG. HEX HEAD	74	1	P733 (1005HV)	VACUUM TANK, SPEEDSTER
16	1	PH627 (Speedster1)	VACUUM HOSE, 1-1/2" x 22" LG.	75	1	PH634-03	HOSE, 1/4" KURITEK x 3" LG.
17	2	H300	HOSE CUFF, 1-1/2"	76	1	B109	FITTING, 1/4" BARB x 1/4" MPT
18	1	G059 (MODIFIED)	EXHAUST BOOT, PLASTISOL	77	1	B119	FILTER STRAINER, 1/4"
19	1	PH627 (Speedster2)	VACUUM HOSE, 1-1/2" x 22" LG.	78	1	H225	DRAIN VALVE, 1-1/2"
				79	1	H226	DRAIN SPOUT, 45 DEG.
<b>20</b>	<b>1</b>	<b>C313</b>	<b>PUMP, 450 psi</b>	80	3	H229	INLET FITTING, PVC, GRAY, 1-1/2"
21	5	B103	90 DEG 1/4" M x FM	81	2	H244	ADAPTER, PVC, 1-1/2"
22	1	H902	PRIME VALVE SETUP	82	2	PH633-11	PIPE, PVC, 1-1/2" x 11" LG.
23	2	B116	FERREL (FOR 1/4" HOSE)	83	2	P755	ELBOW FOR FLOAT ASSEMBLY
24	1	PH634-25	HOSE, 1/4" KURITEK x 25" LG.	84	2	H235	FLOAT CAGE
25	2	B110	FITTING, 1/4 BARB x 1/4 FM SWIVEL	85	1	G060	VACUUM LID GASKET
26	6	H347	HOSE CLAMP	86	1	G056	LID, VACUUM TANK
27	1	PH615-12	HOSE, 1/2" KURITEK x 12" LG.	87	6	H304	SCREW, #8-32 x 5/8" LG. PHIL. OVAL
28	1	B175	IN-LINE FILTER	88	1	G010	BAG, FILTER
29	1	PH615-14	HOSE, 1/2" KURITEK x 14" LG.	89	1	A925	INLET ELBOW ASSEMBLY
30	2	B160	FITTING, 1/2 BARB x 3/8 FM SWIVEL	90	1	G001	GASKET, INLET, 1-1/2"
31	1	PH615-22	HOSE, 1/2" KURITEK x 22" LG.	91	1	H337	SWITCH PLATE, 4-HOLE
32	1	B136	90 DEG 1/4" M x M	92	2	H612	#8 FLAT WASHER
33	12	H289	WASHER, FLAT, #10	93	2	H246	SCREW, #8-32 x 3/8" LG. SOCKET HD. CAP
34	2	H273	KEP-NUT, #10-32, ZINC	94	1	E512	LIGHT, GREEN CIRCUIT INDICATOR
35	2	H222	#10-32 x 1-1/4" LG. PHIL. PAN HD. SCREW	95	3	E515	SWITCH, 2 POSITION ROCKER
36	1	H371	AXLE, 1/2" x 18-1/2" LG.	96	1	E516	3 POSITION ROCKER SWITCH
37	2	H251	WHEEL, 12"	97	1	H308C	GAUGE, PRESSURE
38	4	H254	WASHER, AXLE, 5/8" ID	98	1	AH108S	HOSE, 1/4" x 22" LG. (W/ FITTINGS)
39	2	H219	1/2" AXLE CAP	99	2	H375	HANGER, WIRE FORMED
40	2	H666	CASTER, 5" DIA.				
41	2	H220	CORD STRAIN RELIEF FITTING				
42	2	H221	1/2" STEEL LOCK NUT				
43	2	E550	30" POWER CORD PIGTAIL				
44	2	G131	CONNECTOR, CORD				
45	2	E530	POWER CORD, 50'				
46	1	P732 (1005HV)	SOLUTION TANK, SPEEDSTER				
47	1	G018A	COVER, SOLUTION TANK (FB & SPEEDSTER)				
48	1	B105	REDUCER, 3/8" M x 1/4" FM				
49	8	H876	1/2" FLAT WASHER				
50	3	B111	ADAPTER, 1/4" M x 1/4" FM				
51	1	H378	BRACKET, FRONT HINGE				
52	4	H770	BOLT, 1/4-20 x 1/2" LG. SERRATED FLANGE				
53	2	H204	BOLT, 1/4-20 x 1-3/4" LG. HEX HEAD				
54	1	H896	LATCH BRACKET				
55	2	H922	THUMB SCREW, BLACK PLASTIC				
56	2	H602	"L" BRACKET				
57	8	H877	#10 LOCK WASHER				
58	8	H230	SCREW, #10-32 x 1/2" LG. PHIL. PAN HD.				

ADDITIONAL COMPONENTS NOT SHOWN:

WIRING HARNESS COMPONENTS

- E513 - WIRE TIES, SMALL
- L401A - BOX, MACHINE
- L401B - BOX, TOP TRAY
- L478 - BOX, BOTTOM SUPPORT
- L811 - LABEL SET, SPEEDSTER 1005
- L854 - LABEL, HIGH VELOCITY

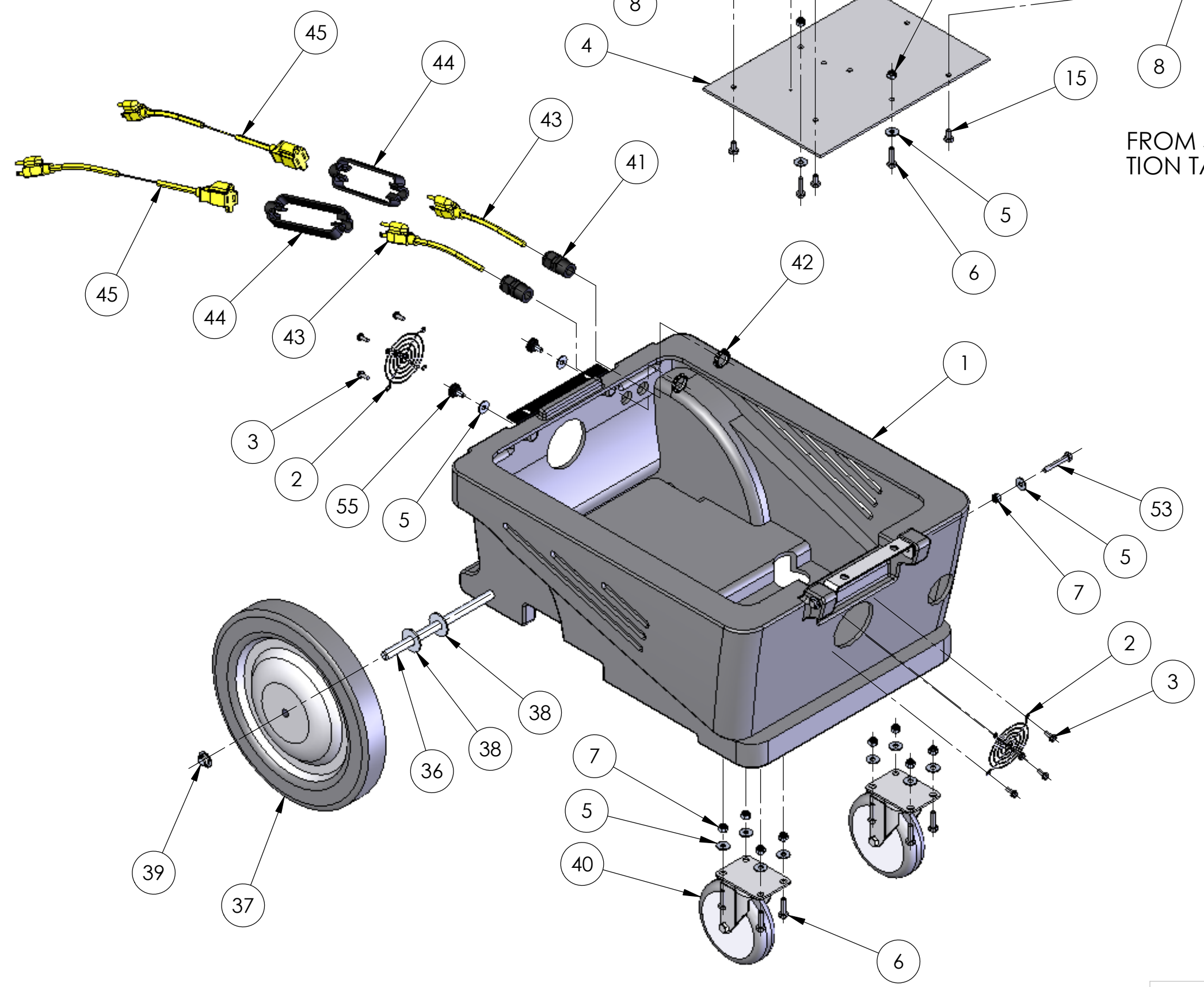
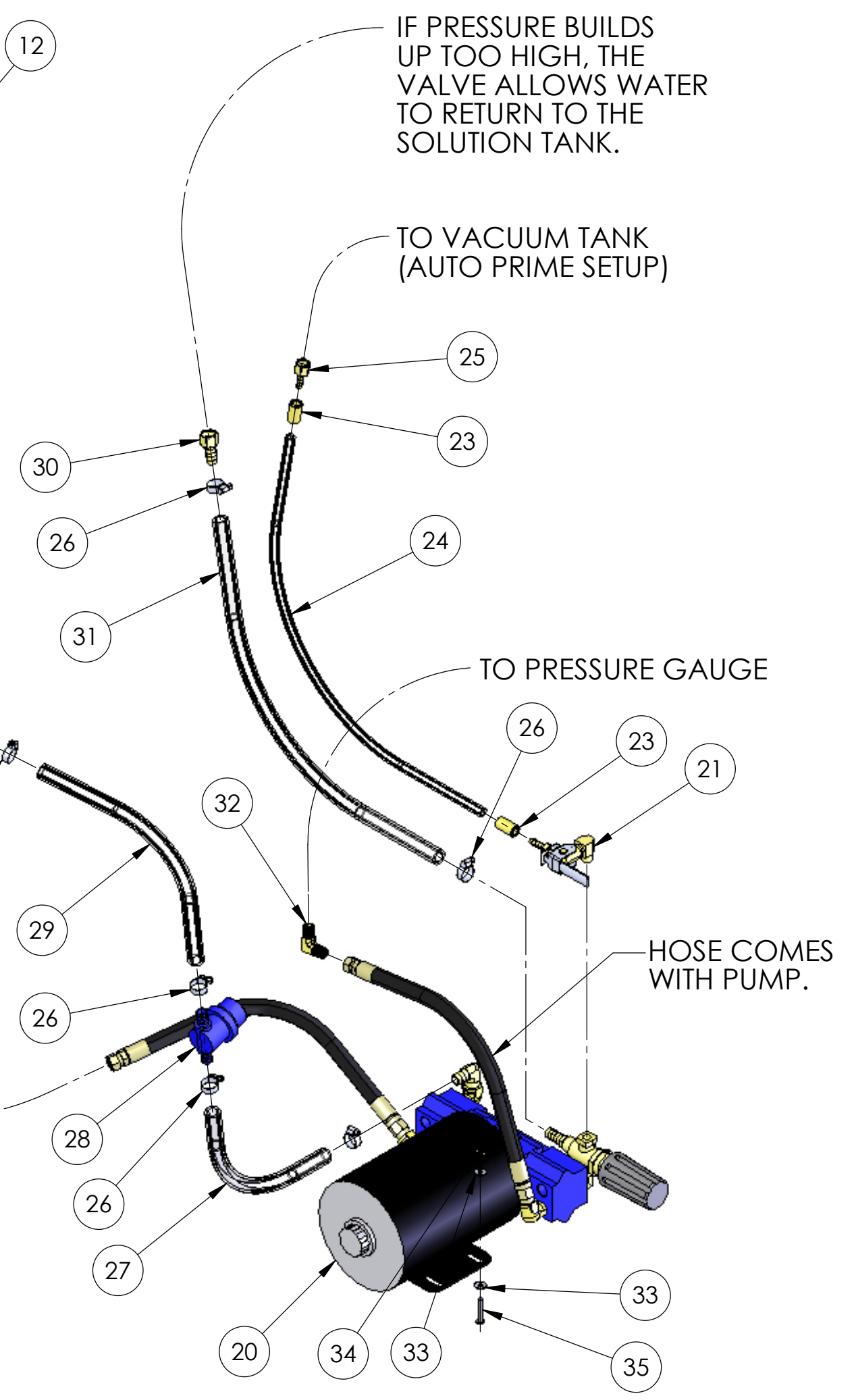
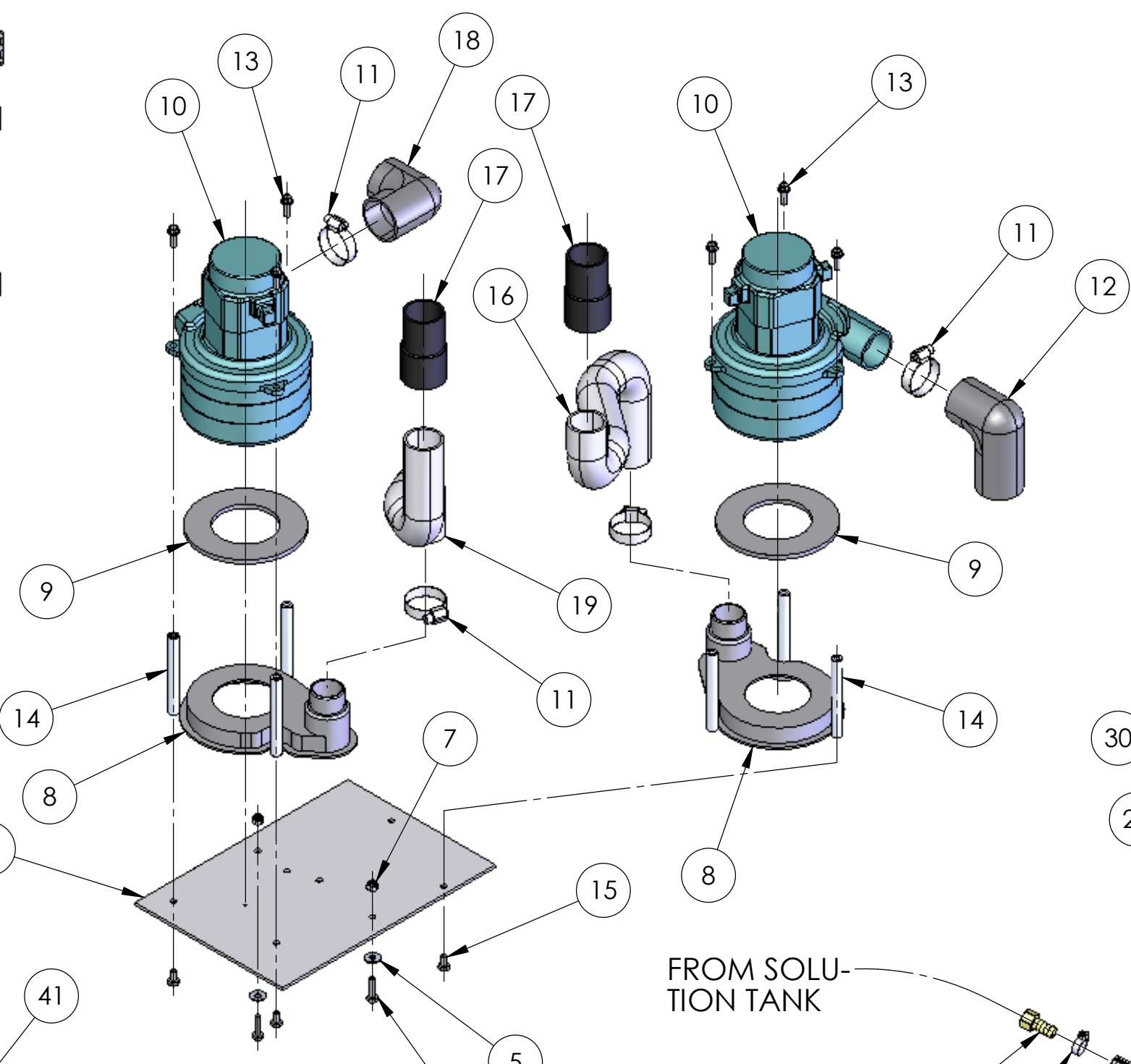
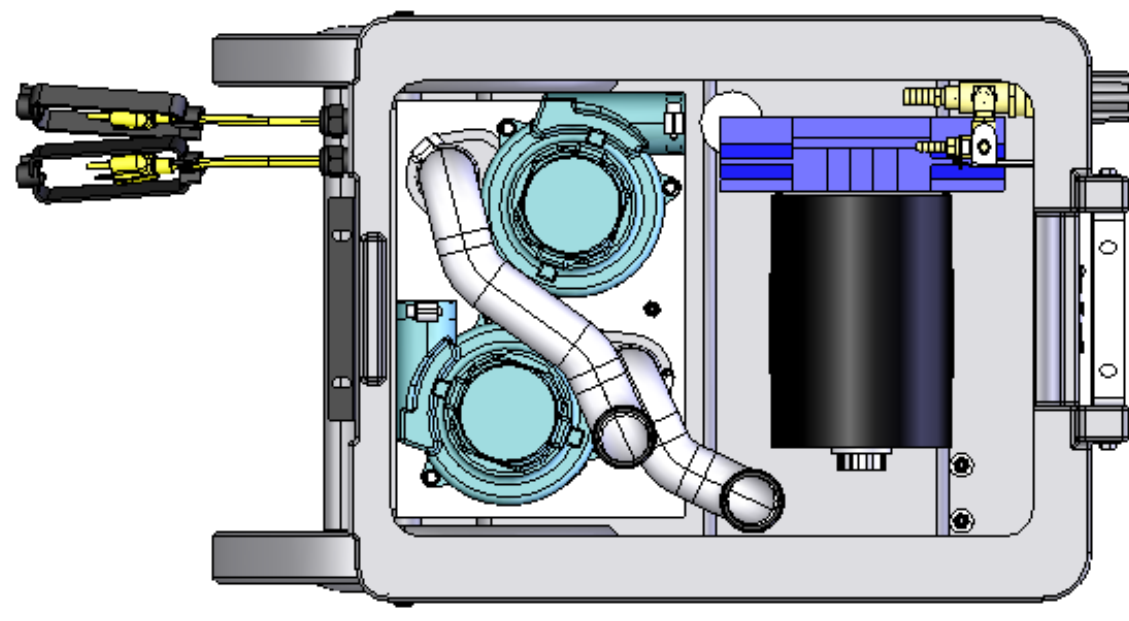


REVISIONS				
ZONE	REV.	DESCRIPTION	DATE	APPROVED
	A	DIFFERENT COMPONENTS IN VAC TANK	12/11/03	
	B	REPLACED H212 WITH H876	4/22/04	
	C	ADDED THUMB SCREWS / WIRE HANGERS	8/2/04	

**PROPRIETARY AND CONFIDENTIAL**  
 THE INFORMATION CONTAINED IN THIS DRAWING IS THE SOLE PROPERTY OF MYTEE PRODUCTS, INC. ANY REPRODUCTION IN PART OR AS A WHOLE WITHOUT THE WRITTEN PERMISSION OF MYTEE PRODUCTS, INC. IS PROHIBITED.

UNLESS OTHERWISE SPECIFIED:		DATE	NAME	<b>MYTEE PRODUCTS, INC.</b> TITLE: <b>SPEEDSTER, 1005HV ASSEMBLY</b> SIZE <b>C</b> DWG. NO. <b>00005</b> REV <b>C</b> SCALE: 1:8 DO NOT SCALE DRAWING SHEET 1 OF 4	
DIMENSIONS ARE IN INCHES		DRAWN	12/8/03		J. Bevier
TOLERANCES:		CHECKED			
FRACTIONAL: ± .015 ANGULAR: MACH ± TWO PLACE DECIMAL ± .010 THREE PLACE DECIMAL ± .005		ENG APPR.			
MATERIAL		COMMENTS:			
SEE B.O.M.					
FINISH					
NEXT ASSY	USED ON				
APPLICATION		USED ON:			

REVISIONS				
ZONE	REV.	DESCRIPTION	DATE	APPROVED
	A	DIFFERENT COMPONENTS IN VAC TANK	12/11/03	
	B	REPLACED H212 WITH H876	4/22/04	
	C	ADDED THUMB SCREWS / WIRE HANGERS	8/2/04	



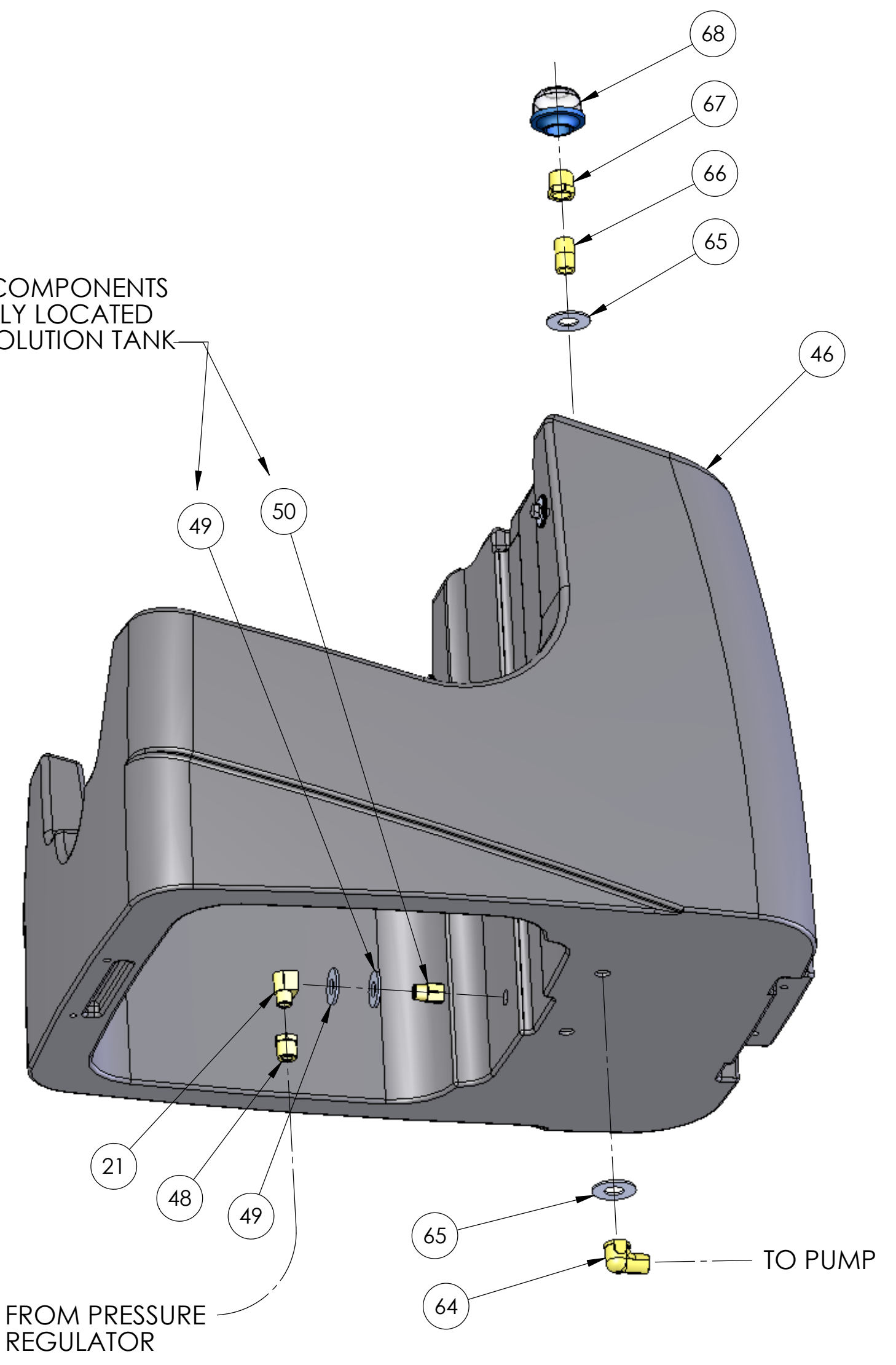
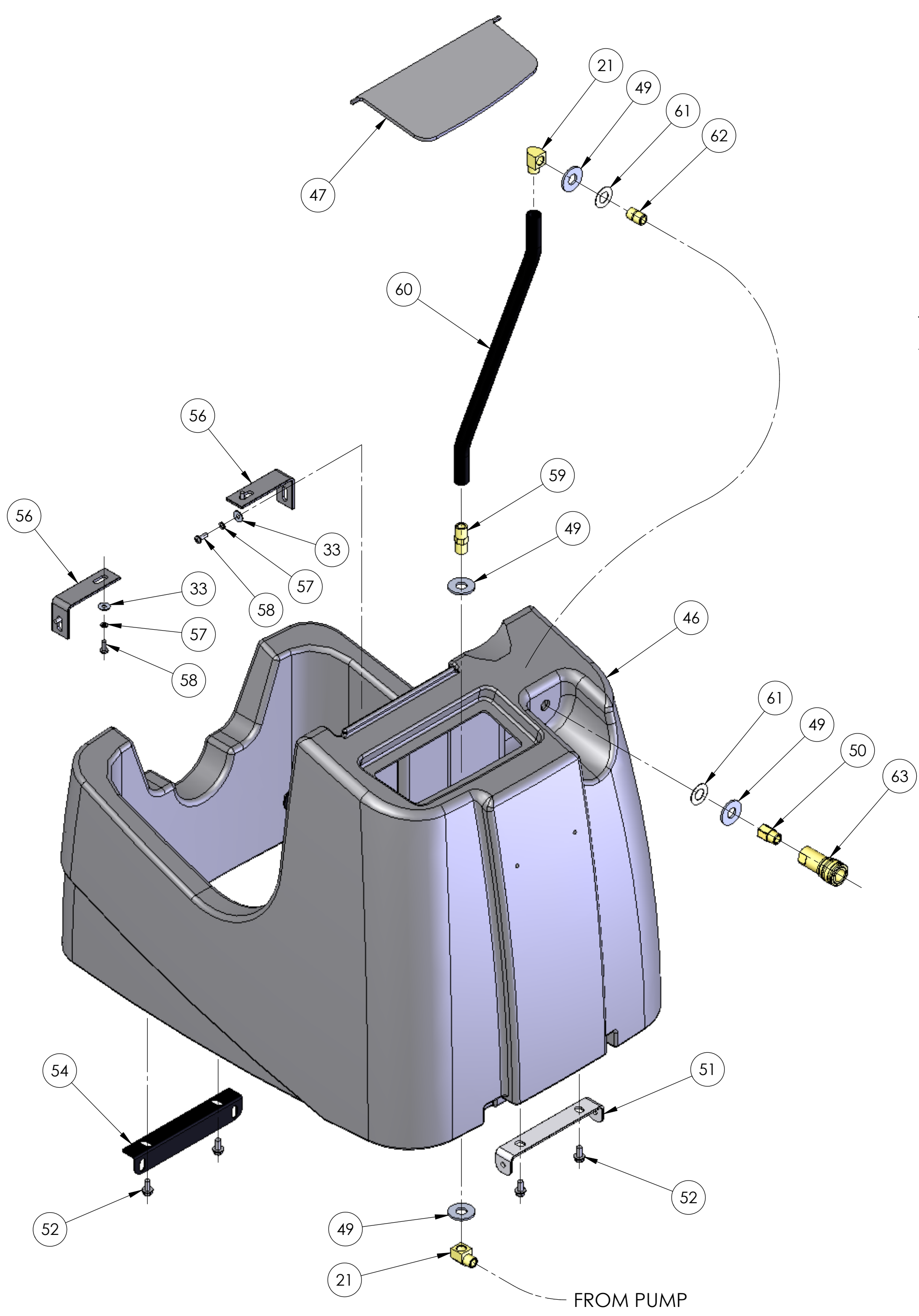
## BASE & COMPONENTS

**PROPRIETARY AND CONFIDENTIAL**  
 THE INFORMATION CONTAINED IN THIS DRAWING IS THE SOLE PROPERTY OF MYTEE PRODUCTS, INC. ANY REPRODUCTION IN PART OR AS A WHOLE WITHOUT THE WRITTEN PERMISSION OF MYTEE PRODUCTS, INC. IS PROHIBITED.

UNLESS OTHERWISE SPECIFIED:		DATE	NAME	<b>MYTEE PRODUCTS, INC.</b> TITLE: <b>SPEEDSTER,          1005HV ASSEMBLY</b> SIZE DWG. NO. REV <b>C 00005 C</b> SCALE: 1:4 DO NOT SCALE DRAWING SHEET 2 OF 4
DIMENSIONS ARE IN INCHES		DRAWN	12/8/03 J. Bevier	
TOLERANCES: FRACTIONAL: ± 015 ANGULAR: MACH ± BEND ± TWO PLACE DECIMAL ± .010 THREE PLACE DECIMAL ± .005		CHECKED		
MATERIAL SEE B.O.M.		ENG APPR.		
FINISH		MFG APPR.		COMMENTS:
NEXT ASSY	USED ON	USED ON:		
APPLICATION				

REVISIONS				
ZONE	REV.	DESCRIPTION	DATE	APPROVED
	A	DIFFERENT COMPONENTS IN VAC TANK	12/11/03	
	B	REPLACED H212 WITH H876	4/22/04	
	C	ADDED THUMB SCREWS / WIRE HANGERS	8/2/04	

THESE TWO COMPONENTS ARE ACTUALLY LOCATED INSIDE THE SOLUTION TANK

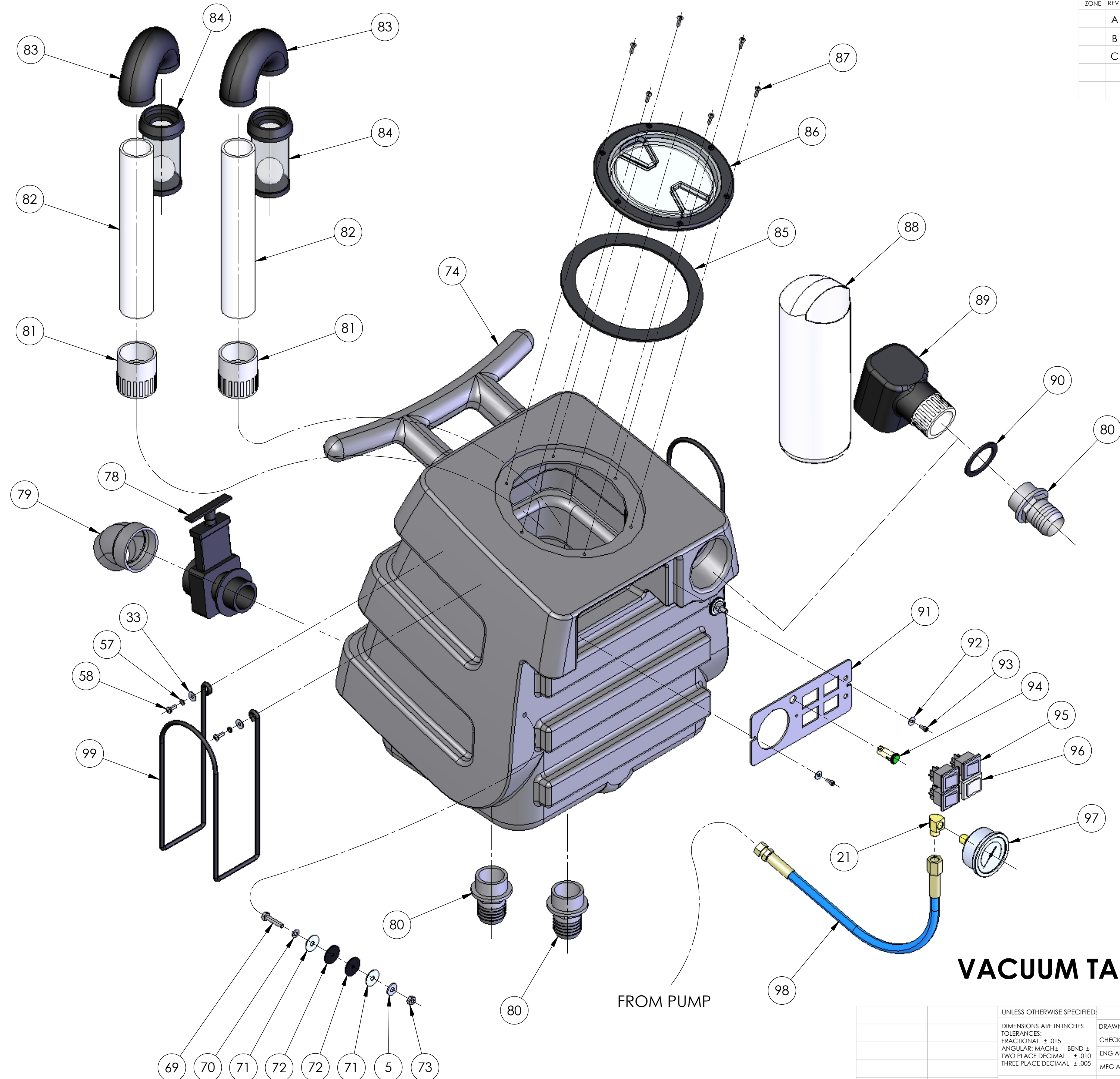


## SOLUTION TANK & COMPONENTS

**PROPRIETARY AND CONFIDENTIAL**  
 THE INFORMATION CONTAINED IN THIS DRAWING IS THE SOLE PROPERTY OF MYTEE PRODUCTS, INC. ANY REPRODUCTION IN PART OR AS A WHOLE WITHOUT THE WRITTEN PERMISSION OF MYTEE PRODUCTS, INC. IS PROHIBITED.

UNLESS OTHERWISE SPECIFIED:		DATE	NAME	<b>MYTEE PRODUCTS, INC.</b> TITLE: <b>SPEEDSTER,          1005HV ASSEMBLY</b> SIZE DWG. NO. REV <b>C 00005 C</b> SCALE: 1:4 DO NOT SCALE DRAWING SHEET 3 OF 4
DIMENSIONS ARE IN INCHES		DRAWN	12/8/03 J. Bevier	
TOLERANCES:		CHECKED		
FRACTIONAL: ± .015		ENG APPR.		
ANGULAR: MACH ± BEND ±		MFG APPR.		
TWO PLACE DECIMAL ± .010		COMMENTS:		
THREE PLACE DECIMAL ± .005		MATERIAL		
		SEE B.O.M.		
		FINISH		
NEXT ASSY	USED ON	USED ON:		
APPLICATION				

REVISIONS				
ZONE	REV.	DESCRIPTION	DATE	APPROVED
	A	DIFFERENT COMPONENTS IN VAC TANK	12/11/03	
	B	REPLACED H212 WITH H876	4/22/04	
	C	ADDED THUMB SCREWS / WIRE HANGERS	8/2/04	



THESE FASTENERS HOLD THE SOLUTION TANK AND VACUUM TANK TOGETHER.

FROM PUMP

# VACUUM TANK & COMPONENTS

**PROPRIETARY AND CONFIDENTIAL**  
 THE INFORMATION CONTAINED IN THIS DRAWING IS THE SOLE PROPERTY OF MYTEE PRODUCTS, INC. ANY REPRODUCTION IN PART OR AS A WHOLE WITHOUT THE WRITTEN PERMISSION OF MYTEE PRODUCTS, INC. IS PROHIBITED.

UNLESS OTHERWISE SPECIFIED:		DATE	NAME
DIMENSIONS ARE IN INCHES		12/8/03	J. Bevier
TOLERANCES:			
FRACTIONAL: ± .015			
ANGULAR: MACH ±			
TWO PLACE DECIMAL ± .010			
THREE PLACE DECIMAL ± .005			
MATERIAL	SEE B.O.M.		
FINISH			
NEXT ASSY	USED ON		
APPLICATION			

MYTEE PRODUCTS, INC.		
TITLE:		
<b>SPEEDSTER, 1005HV ASSEMBLY</b>		
SIZE	DWG. NO.	REV
<b>C</b>	<b>00005</b>	<b>C</b>
SCALE: 1:4	DO NOT SCALE DRAWING	SHEET 4 OF 4